

For Research Use Only

# ELAVL2 Monoclonal antibody

Catalog Number: 67097-1-Ig **2 Publications**



## Basic Information

Catalog Number:

67097-1-Ig

Size:

1900 µg/ml

Source:

Mouse

Isotype:

IgG1

Immunogen Catalog Number:

AG28310

GenBank Accession Number:

BC030692

GeneID (NCBI):

1993

UNIPROT ID:

Q12926

Full Name:

ELAV (embryonic lethal, abnormal vision, Drosophila)-like 2 (Hu antigen B)

Calculated MW:

39 kDa

Observed MW:

35-40 kDa

Purification Method:

Protein G purification

CloneNo.:

2D8C10

Recommended Dilutions:

WB 1:5000-1:50000

## Applications

Tested Applications:

WB, ELISA

Cited Applications:

IF, WB

Species Specificity:

Human, mouse, rat, pig, rabbit

Cited Species:

human, mouse

Positive Controls:

WB : HEK-293 cells, SH-SY5Y cells, PC-12 cells, Neuro-2a cells, pig brain tissue, rabbit brain tissue, rat brain tissue, mouse brain tissue

## Background Information

The ELAV (embryonic lethal abnormal visual system) gene of *D. Melanogaste* is the the first identified member of a family of neuronal RNA binding proteins that is conserved in metazoans. The proteins in this family contain three RNA Recognition Motifs (RRM), with a hinge region separating the second and third RRM and an optional non-conserved N-terminal region. The hinge includes signals essential for nuclear export and subcellular localization [PMID:9874760]. Elav is expressed specifically in the neurons and is required for the correct development and maintenance of the nervous system. ELAVL2 can binds RNA, and recognize a GAAA motif. In addition, it can bind to its own 3'-UTR, the FOS 3'-UTR and the ID 3'-UTR [PMID:18715504,21695151].

## Notable Publications

Author	Pubmed ID	Journal	Application
Dominika Grzejda	36170367	Sci Adv	WB
Sandra Diaz-Garcia	34618203	Acta Neuropathol	IF

## Storage

Storage:

Store at -20°C. Stable for one year after shipment.

Storage Buffer:

PBS with 0.02% sodium azide and 50% glycerol pH 7.3.

Aliquoting is unnecessary for -20°C storage

For technical support and original validation data for this product please contact:

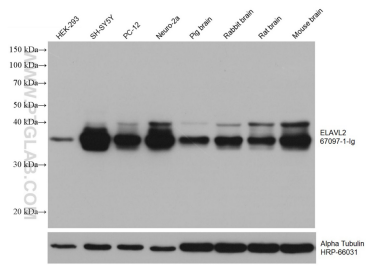
T: 4006900926

E: Proteintech-CN@ptglab.com

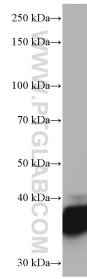
W: ptgcn.com

**This product is exclusively available under Proteintech Group brand and is not available to purchase from any other manufacturer.**

## Selected Validation Data



Various lysates were subjected to SDS PAGE followed by western blot with 67097-1-Ig (ELAVL2 antibody) at dilution of 1:10000 incubated at room temperature for 1.5 hours. The membrane was stripped and reblotted with HRP-conjugated Alpha Tubulin Monoclonal antibody (HRP-66031) as loading control.



Neuro-2a cells were subjected to SDS PAGE followed by western blot with 67097-1-Ig (ELAVL2 antibody) at dilution of 1:10000 incubated at room temperature for 1.5 hours.