

For Research Use Only

IDE Monoclonal antibody

Catalog Number: 67106-1-Ig

Featured Product

1 Publications



Basic Information

Catalog Number:

67106-1-Ig

Size:

2500 µg/ml

Source:

Mouse

Isotype:

IgG2b

Immunogen Catalog Number:

AG17161

GenBank Accession Number:

BC096336

GeneID (NCBI):

3416

UNIPROT ID:

P14735

Full Name:

Abeta degrading protease

Calculated MW:

1019 aa, 118 kDa

Observed MW:

100-120 kDa

Purification Method:

Protein A purification

CloneNo.:

3E10G1

Recommended Dilutions:

WB 1:5000-1:50000

Applications

Tested Applications:

WB, ELISA

Cited Applications:

WB

Species Specificity:

Human, Mouse, Rat

Cited Species:

mouse

Positive Controls:

WB : HeLa cells, A375 cells, HepG2 cells, Jurkat cells, HSC-T6 cells, NIH/3T3 cells, RAW 264.7 cells, A431 cells, HEK-293 cells, MCF-7 cells, NCCIT cells, HT-1080 cells, LNCaP cells

Background Information

IDE(INS-degrading enzyme) belongs to the peptidase M16 family. It is also known as insulysin and is a 110-kD neutral metallopeptidase that can degrade a number of peptides, including INS and beta-amyloid(PMID:9830016). The reduction of IDE expression may be a risk factor for AD, and that IDE may interact with APOE status to affect beta-amyloid metabolism(PMID:12507914). It can exist as a homodimer and form higher oligomers(PMID:17613531).

Notable Publications

Author	Pubmed ID	Journal	Application
Qian Su	36726048	Mol Nutr Food Res	WB

Storage

Storage:

Store at -20°C. Stable for one year after shipment.

Storage Buffer:

PBS with 0.02% sodium azide and 50% glycerol pH 7.3.

Aliquoting is unnecessary for -20°C storage

For technical support and original validation data for this product please contact:

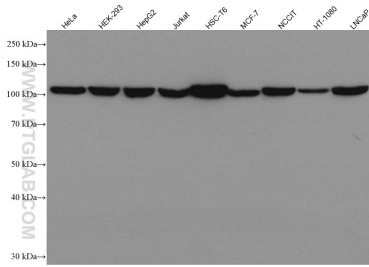
T: 4006900926

E: Proteintech-CN@ptglab.com

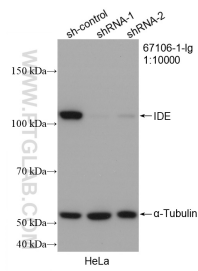
W: ptgcn.com

This product is exclusively available under Proteintech Group brand and is not available to purchase from any other manufacturer.

Selected Validation Data



Various lysates were subjected to SDS PAGE followed by western blot with 67106-1-Ig (IDE antibody) at dilution of 1:10000 incubated at room temperature for 1.5 hours.



WB result of IDE antibody (67106-1-Ig; 1:10000; incubated at room temperature for 1.5 hours) with sh-Control and sh-IDE transfected HeLa cells.