

For Research Use Only

CDC25B Monoclonal antibody

Catalog Number: 67145-1-Ig



Basic Information

Catalog Number:

67145-1-Ig

Size:

1600 µg/ml

Source:

Mouse

Isotype:

IgG2b

Immunogen Catalog Number:

AG27193

GenBank Accession Number:

BC006395

GeneID (NCBI):

994

UNIPROT ID:

P30305

Full Name:

cell division cycle 25 homolog B (S. pombe)

Calculated MW:

65 kDa

Observed MW:

69 kDa

Purification Method:

Protein A purification

CloneNo.:

1H3A4

Recommended Dilutions:

WB 1:5000-1:50000

IF 1:200-1:800

Applications

Tested Applications:

IF/ICC, WB, ELISA

Species Specificity:

Human, Mouse, rat

Positive Controls:

WB : Sp2/O cells, Jurkat cells, U-937 cells

IF : Jurkat cells,

Background Information

CDC25B, also named as CDC25HU2, belongs to the MPI phosphatase family. It is a tyrosine protein phosphatase which functions as a dosage-dependent inducer of mitotic progression. CDC25B directly dephosphorylates CDK1 and stimulates its kinase activity. The three isoforms seem to have a different level of activity.

Storage

Storage:

Store at -20°C.

Storage Buffer:

PBS with 0.02% sodium azide and 50% glycerol pH 7.3.

Aliquoting is unnecessary for -20°C storage

For technical support and original validation data for this product please contact:

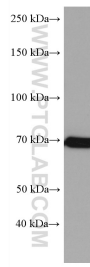
T: 4006900926

E: Proteintech-CN@ptglab.com

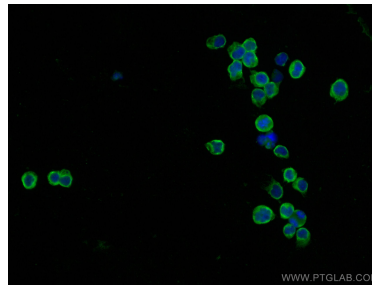
W: ptgcn.com

This product is exclusively available under Proteintech Group brand and is not available to purchase from any other manufacturer.

Selected Validation Data



Sp2/O cells were subjected to SDS PAGE followed by western blot with 67145-1-Ig (CDC25B antibody) at dilution of 1:10000 incubated at room temperature for 1.5 hours.



Immunofluorescent analysis of (4% PFA) fixed Jurkat cells using CDC25B antibody (67145-1-Ig, Clone: 1H3A4) at dilution of 1:400 and CoraLite®488-Conjugated AffiniPure Goat Anti-Mouse IgG(H+L).