

For Research Use Only

CUL2 Monoclonal antibody

Catalog Number: 67175-1-Ig

Featured Product

1 Publications



Basic Information

Catalog Number:

67175-1-Ig

Concentration:

2300 ug/ml

Source:

Mouse

Isotype:

IgG1

Immunogen Catalog Number:

AG28654

GenBank Accession Number:

BC009591

GeneID (NCBI):

8453

UNIPROT ID:

Q13617

Full Name:

cullin 2

Calculated MW:

87 kDa

Observed MW:

85-90 kDa

Purification Method:

Protein G purification

CloneNo.:

1A6G9

Recommended Dilutions:

WB 1:5000-1:50000

IHC 1:250-1:1000

IF/ICC 1:200-1:800

Applications

Tested Applications:

WB, IHC, IF/ICC, ELISA

Cited Applications:

WB, IF, IP

Species Specificity:

human, rat

Cited Species:

human

Note-IHC: suggested antigen retrieval with TE buffer pH 9.0; (*) Alternatively, antigen retrieval may be performed with citrate buffer pH 6.0

Positive Controls:

WB : A431 cells, HEK-293 cells, HeLa cells, HSC-T6 cells, MCF-7 cells, PC-3 cells, Raji cells, SW 1990 cells, TF-1 cells, K-562 cells

IHC : human breast cancer tissue, human prostate cancer tissue

IF/ICC : HeLa cells,

Background Information

The cullin family proteins are scaffold proteins for the Ring finger type E3 ligases, participating in the proteolysis through the ubiquitin-proteasome pathway. Humans express seven cullin proteins: CUL1-3, CUL4A, CUL4B, CUL5, and CUL7. Each cullin protein can form an E3 ligase similar to the prototype Ring-type E3 ligase Skp1-CUL1-F-box complex. The Cullin-RING-finger type E3 ligases are important regulators in early embryonic development, as highlighted by genetic studies demonstrating that knock-out of CUL1, CUL3, or CUL4A in mice results in early embryonic lethality.

Notable Publications

Author	Pubmed ID	Journal	Application
Tiantian Wang	38978293	FEBS J	WB,IP,IF

Storage

Storage:

Store at -20°C. Stable for one year after shipment.

Storage Buffer:

PBS with 0.02% sodium azide and 50% glycerol, pH7.3

Aliquoting is unnecessary for -20°C storage

For technical support and original validation data for this product please contact:

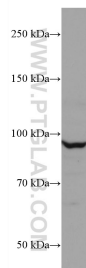
T: 4006900926

E: Proteintech-CN@ptglab.com

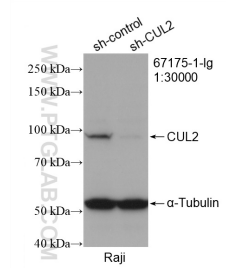
W: ptgcn.com

This product is exclusively available under Proteintech Group brand and is not available to purchase from any other manufacturer.

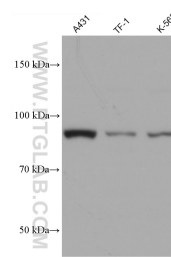
Selected Validation Data



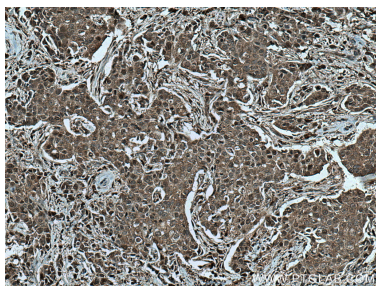
MCF-7 cells were subjected to SDS PAGE followed by western blot with 67175-1-Ig (CUL2 antibody) at dilution of 1:10000 incubated at room temperature for 1.5 hours.



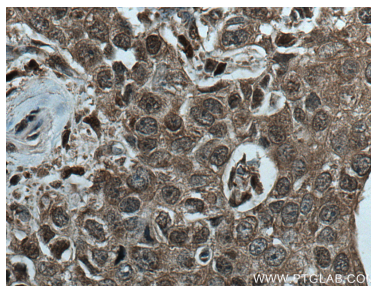
WB result of CUL2 antibody (67175-1-Ig; 1:30000; incubated at room temperature for 1.5 hours) with sh-Control and sh-CUL2 transfected Raji cells.



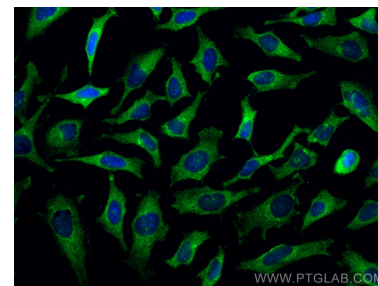
Various lysates were subjected to SDS PAGE followed by western blot with 67175-1-Ig (CUL2 antibody) at dilution of 1:18000 incubated at room temperature for 1.5 hours.



Immunohistochemical analysis of paraffin-embedded human breast cancer tissue slide using 67175-1-Ig (CUL2 antibody) at dilution of 1:500 (under 10x lens). Heat mediated antigen retrieval with Tris-EDTA buffer (pH 9.0).



Immunohistochemical analysis of paraffin-embedded human breast cancer tissue slide using 67175-1-Ig (CUL2 antibody) at dilution of 1:500 (under 40x lens). Heat mediated antigen retrieval with Tris-EDTA buffer (pH 9.0).



Immunofluorescent analysis of (-20°C Methanol) fixed HeLa cells using CUL2 antibody (67175-1-Ig, Clone: 1A6G9) at dilution of 1:400 and CoraLite®488-Conjugated AffiniPure Goat Anti-Mouse IgG(H+L).