

For Research Use Only

NEDD4L Monoclonal antibody

Catalog Number: 67276-1-Ig



Basic Information

Catalog Number:

67276-1-Ig

Size:

1500 µg/ml

Source:

Mouse

Isotype:

IgG1

Immunogen Catalog Number:

AG4565

GenBank Accession Number:

BC032597

GeneID (NCBI):

23327

UNIPROT ID:

Q96PU5

Full Name:

neural precursor cell expressed,
developmentally down-regulated 4-
like

Calculated MW:

854 aa, 96 kDa

Observed MW:

112 kDa, 125 kDa

Purification Method:

Protein G purification

CloneNo.:

2F6H6

Recommended Dilutions:

WB 1:3000-1:10000

IF 1:1500-1:6000

Applications

Tested Applications:

IF/ICC, WB, ELISA

Species Specificity:

Human, Mouse, Rat

Positive Controls:

WB: Jurkat cells, HSC-T6 cells, NIH/3T3 cells, 4T1 cells

IF: PC-3 cells,

Background Information

NEDD4L (E3 ubiquitin-protein ligase NEDD4-like) is also named as KIAA0439, NEDL3, Nedd4-2. It accepts ubiquitin from an E2 ubiquitin-conjugating enzyme in the form of a thioester and then directly transfers the ubiquitin to targeted substrates and is the principal ubiquitin ligase that selectively targets activated SMAD2 and SMAD3 for destruction (PMID:19917253). Nedd4L binds the PY motif of ENaC COOH terminals and catalyzes ubiquitination of the NH2 terminus of the protein for subsequent degradation (PMID:18268134). It has some isoforms produced by alternative splicing. This antibody may have cross reaction with NEDD4 due to the high homology of the antigen.

Storage

Storage:

Store at -20°C. Stable for one year after shipment.

Storage Buffer:

PBS with 0.02% sodium azide and 50% glycerol pH 7.3.

Aliquoting is unnecessary for -20°C storage

For technical support and original validation data for this product please contact:

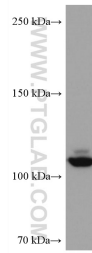
T: 4006900926

E: Proteintech-CN@ptglab.com

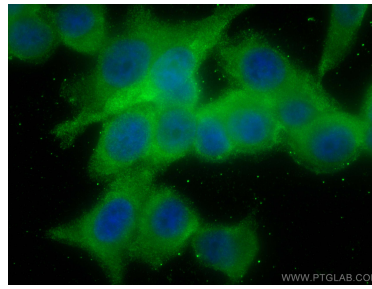
W: ptgcn.com

This product is exclusively available under Proteintech Group brand and is not available to purchase from any other manufacturer.

Selected Validation Data



Jurkat cells were subjected to SDS PAGE followed by western blot with 67276-1-Ig (NEDD4L antibody) at dilution of 1:10000 incubated at room temperature for 1.5 hours.



Immunofluorescent analysis of (-20°C Methanol) fixed PC-3 cells using NEDD4L antibody (67276-1-Ig, Clone: 2F6H6) at dilution of 1:3000 and CoraLite®488-Conjugated AffiniPure Goat Anti-Mouse IgG(H+L).