

For Research Use Only

# DOCK1 Monoclonal antibody

Catalog Number: 67296-1-Ig



## Basic Information

<b>Catalog Number:</b> 67296-1-Ig	<b>GenBank Accession Number:</b> BC146857	<b>Purification Method:</b> Protein A purification
<b>Size:</b> 1700 µg/ml	<b>GeneID (NCBI):</b> 1793	<b>CloneNo.:</b> 1C3F12
<b>Source:</b> Mouse	<b>UNIPROT ID:</b> Q14185	<b>Recommended Dilutions:</b> WB 1:1000-1:6000
<b>Isotype:</b> IgG2a	<b>Full Name:</b> dedicator of cytokinesis 1	
<b>Immunogen Catalog Number:</b> AG18069	<b>Calculated MW:</b> 1865 aa, 215 kDa	
	<b>Observed MW:</b> 215 kDa	

## Applications

<b>Tested Applications:</b> WB, ELISA	<b>Positive Controls:</b> WB : HeLa cells, HSC-T6 cells, HEK-293 cells, HepG2 cells, 4T1 cells, NIH/3T3 cells
<b>Species Specificity:</b> Human, mouse, rat	

## Background Information

DOCK1, also named as DOCK180, belongs to the DOCK family. It is involved in cytoskeletal rearrangements required for phagocytosis of apoptotic cells and cell motility. DOCK1 functions as a guanine nucleotide exchange factor (GEF), which activates Rac Rho small GTPases by exchanging bound GDP for free GTP. Its GEF activity may be enhanced by ELMO1.

## Storage

**Storage:**  
Store at -20°C. Stable for one year after shipment.  
**Storage Buffer:**  
PBS with 0.02% sodium azide and 50% glycerol pH 7.3.  
Aliquoting is unnecessary for -20°C storage

For technical support and original validation data for this product please contact:

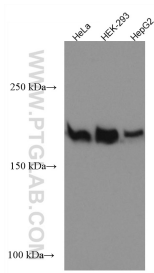
T: 4006900926

E: [Proteintech-CN@ptglab.com](mailto:Proteintech-CN@ptglab.com)

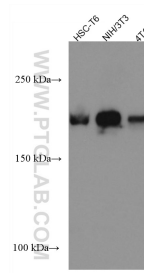
W: [ptgcn.com](http://ptgcn.com)

This product is exclusively available under Proteintech Group brand and is not available to purchase from any other manufacturer.

## Selected Validation Data



Various lysates were subjected to SDS PAGE followed by western blot with 67296-1-Ig (DOCK1 antibody) at dilution of 1:3000 incubated at room temperature for 1.5 hours.



Various lysates were subjected to SDS PAGE followed by western blot with 67296-1-Ig (DOCK1 antibody) at dilution of 1:3000 incubated at room temperature for 1.5 hours.