

Alpha 2-Antiplasmin Monoclonal antibody

Catalog Number: 67308-1-Ig

Basic Information

Catalog Number:

67308-1-Ig

Size:

1802 µg/ml

Source:

Mouse

Isotype:

IgG1

Immunogen Catalog Number:

AG4095

GenBank Accession Number:

BC031592

GeneID (NCBI):

5345

UNIPROT ID:

P08697

Full Name:

serpin peptidase inhibitor, clade F
(alpha-2 antiplasmin, pigment
epithelium derived factor), member 2

Calculated MW:

491 aa, 55 kDa

Observed MW:

55 kDa

Purification Method:

Protein G purification

CloneNo.:

3F6C3

Recommended Dilutions:

WB 1:5000-1:20000

IHC 1:50-1:500

IF 1:50-1:500

Applications

Tested Applications:

IF/ICC, IHC, WB, ELISA

Species Specificity:

Human

**Note-IHC: suggested antigen retrieval with
TE buffer pH 9.0; (*) Alternatively, antigen
retrieval may be performed with citrate
buffer pH 6.0**

Positive Controls:

WB : HepG2 cells, human plasma, THP-1 cells, K-562
cells, HuH-7 cells

IHC : human liver tissue,

IF : HepG2 cells,

Background Information

Storage

Storage:

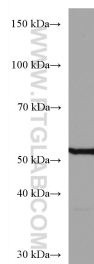
Store at -20°C.

Storage Buffer:

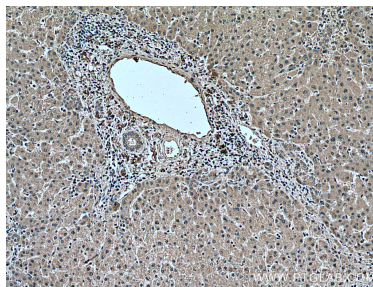
PBS with 0.02% sodium azide and 50% glycerol pH 7.3.

Aliquoting is unnecessary for -20°C storage

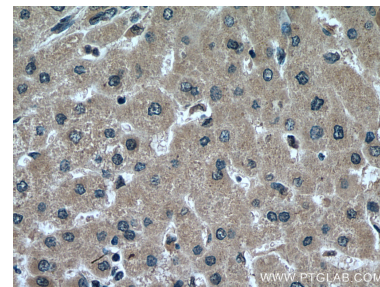
Selected Validation Data



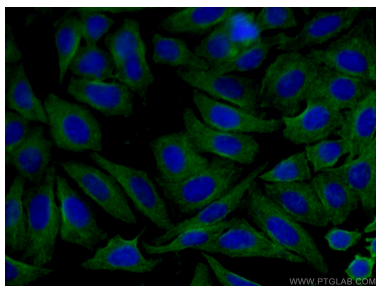
HepG2 cells were subjected to SDS PAGE followed by western blot with 67308-1-Ig (Alpha-2-antiplasmin antibody) at dilution of 1:20000 incubated at room temperature for 1.5 hours.



Immunohistochemical analysis of paraffin-embedded human liver tissue slide using 67308-1-Ig (Alpha-2-antiplasmin antibody) at dilution of 1:200 (under 10x lens). Heat mediated antigen retrieval with Tris-EDTA buffer (pH 9.0).



Immunohistochemical analysis of paraffin-embedded human liver tissue slide using 67308-1-Ig (Alpha-2-antiplasmin antibody) at dilution of 1:200 (under 40x lens). Heat mediated antigen retrieval with Tris-EDTA buffer (pH 9.0).



Immunofluorescent analysis of (-20°C Ethanol) fixed HepG2 cells using 67308-1-Ig (Alpha-2-antiplasmin antibody) at dilution of 1:100 and CoraLite488-Conjugated AffiniPure Goat Anti-Mouse IgG(H+L).