

MAP1B Monoclonal antibody

Catalog Number: 67423-1-Ig 1 Publications

Basic Information

Catalog Number:	67423-1-Ig	GenBank Accession Number:	BC141853	Purification Method:	Protein G purification
Concentration:	2100 ug/ml	GeneID (NCBI):	4131	CloneNo.:	1E6B9
Source:	Mouse	UNIPROT ID:	P46821	Recommended Dilutions:	IHC 1:2500-1:10000 IF-P 1:50-1:500
Isotype:	IgG1	Full Name:	microtubule-associated protein 1B		
Immunogen Catalog Number:	AG17709	Calculated MW:	2468 aa, 271 kDa		

Applications

Tested Applications:	IHC, IF-P, ELISA	Positive Controls:	
Cited Applications:	WB, IF	IHC :	rat brain tissue, mouse brain tissue
Species Specificity:	human, mouse, rat	IF-P :	rat brain tissue,
Cited Species:	rat		

Note-IHC: suggested antigen retrieval with TE buffer pH 9.0; (*) Alternatively, antigen retrieval may be performed with citrate buffer pH 6.0

Background Information

Microtubule-associated protein 1B (MAP1B) is a cytoskeleton protein which can promote microtubule assembly. Previous reports have suggested that this protein is closely involved in neuronal development based on its extensive expression in the developing brain and moderate in mature neurons. Gene disruption or knockout studies of the MAP1B gene led to a delayed development of the nervous system in mice. It includes the N-terminal heavy chain and a C-terminal light chain. The MAP1B heavy chain has a microtubule-stabilization effect, and contains an actin-binding site that may play a role in the crosslinking of actin and microtubules, a function that may be important in neurite elongation. Various isoforms around 300-350 kDa of MAP1B can be observed due to the differences in phosphorylation state. (10704485)

Notable Publications

Author	Pubmed ID	Journal	Application
Tiancheng Bao	39383832	Biochem Biophys Res Commun	WB,IF

Storage

Storage:
Store at -20°C. Stable for one year after shipment.
Storage Buffer:
PBS with 0.02% sodium azide and 50% glycerol, pH7.3
Aliquoting is unnecessary for -20°C storage

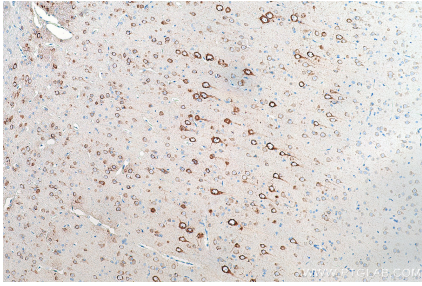
For technical support and original validation data for this product please contact:

T: 4006900926

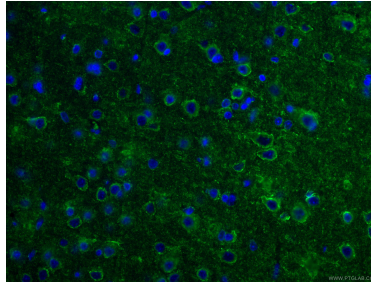
E: Proteintech-CN@ptglab.comW: ptgcn.com

This product is exclusively available under Proteintech Group brand and is not available to purchase from any other manufacturer.

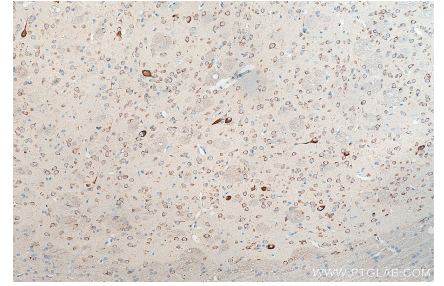
Selected Validation Data



Immunohistochemical analysis of paraffin-embedded rat brain tissue slide using 67423-1-Ig (MAP1B antibody) at dilution of 1:5000 (under 10x lens). Heat mediated antigen retrieval with Tris-EDTA buffer (pH 9.0).



Immunofluorescent analysis of (4% PFA) fixed rat brain tissue using 67423-1-Ig (MAP1B antibody), at dilution of 1:200 and CoraLite®488-Conjugated AffiniPure Goat Anti-Mouse IgG(H+L).



Immunohistochemical analysis of paraffin-embedded rat brain tissue slide using 67423-1-Ig (MAP1B antibody) at dilution of 1:5000 (under 10x lens). Heat mediated antigen retrieval with Tris-EDTA buffer (pH 9.0).