

For Research Use Only

MAP1B Monoclonal antibody, PBS Only



Catalog Number: 67423-1-PBS

Basic Information

Catalog Number: 67423-1-PBS	GenBank Accession Number: BC141853	Purification Method: Protein A purification
Size: 1 mg/ml	GeneID (NCBI): 4131	CloneNo.: 1E6B9
Source: Mouse	UNIPROT ID: P46821	
Isotype: IgG1	Full Name: microtubule-associated protein 1B	
Immunogen Catalog Number: AG17709	Calculated MW: 2468 aa, 271 kDa	

Applications

Tested Applications:
IHC,IF,FC,ELISA

Species Specificity:
Human, rat, mouse

Background Information

Microtubule-associated protein 1B (MAP1B) is a cytoskeleton protein which can promote microtubule assembly. Previous reports have suggested that this protein is closely involved in neuronal development based on its extensive expression in the developing brain and moderate in mature neurons. Gene disruption or knockout studies of the MAP1B gene led to a delayed development of the nervous system in mice. It includes the N-terminal heavy chain and a C-terminal light chain. The MAP1B heavy chain has a microtubule-stabilization effect, and contains an actin-binding site that may play a role in the crosslinking of actin and microtubules, a function that may be important in neurite elongation. Various isoforms around 300-350 kDa of MAP1B can be observed due to the differences in phosphorylation state. (10704485)

Storage

Storage:
Store at -20°C. Stable for one year after shipment.

Storage Buffer:
PBS only

Aliquoting is unnecessary for -20°C storage

For technical support and original validation data for this product please contact:

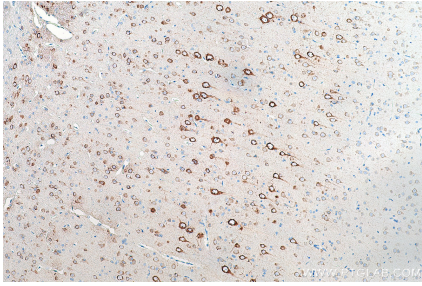
T: 4006900926

E: Proteintech-CN@ptglab.com

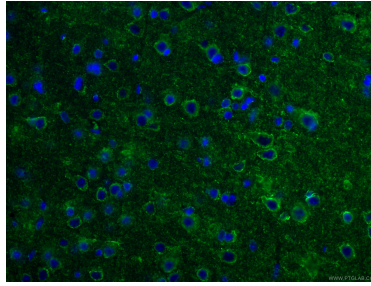
W: ptgcn.com

This product is exclusively available under Proteintech Group brand and is not available to purchase from any other manufacturer.

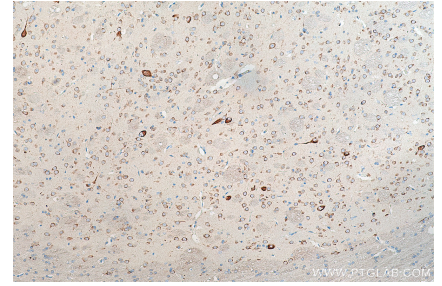
Selected Validation Data



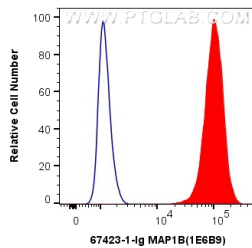
Immunohistochemical analysis of paraffin-embedded rat brain tissue slide using 67423-1-Ig (MAP1B antibody) at dilution of 1:5000 (under 10x lens). Heat mediated antigen retrieval with Tris-EDTA buffer (pH 9.0). This data was developed using the same antibody clone with 67423-1-PBS in a different storage buffer formulation.



Immunofluorescent analysis of (4% PFA) fixed rat brain tissue using 67423-1-Ig (MAP1B antibody), at dilution of 1:200 and CoraLite@488-Conjugated AffiniPure Goat Anti-Mouse IgG(H+L). This data was developed using the same antibody clone with 67423-1-PBS in a different storage buffer formulation.



Immunohistochemical analysis of paraffin-embedded rat brain tissue slide using 67423-1-Ig (MAP1B antibody) at dilution of 1:5000 (under 10x lens). Heat mediated antigen retrieval with Tris-EDTA buffer (pH 9.0). This data was developed using the same antibody clone with 67423-1-PBS in a different storage buffer formulation.



1X10⁶ SH-SY5Y cells were intracellularly stained with 0.4 ug Anti-Human MAP1B (67423-1-Ig, Clone:1E6B9) and CoraLite@488-Conjugated AffiniPure Goat Anti-Mouse IgG(H+L) at dilution 1:1000 (red), or 0.4 ug Mouse IgG1 Isotype Control (MOPC-21) (65124-1-Ig, Clone: MOPC-21) (blue). Cells were fixed with 4% PFA and permeabilized with Flow Cytometry Perm Buffer (PF00011-C). This data was developed using the same antibody clone with 67423-1-PBS in a

