

For Research Use Only

Arfaptin-1 Monoclonal antibody

Catalog Number: 67461-1-Ig



Basic Information

Catalog Number: 67461-1-Ig	GenBank Accession Number: BC103759	Purification Method: Protein A purification
Size: 1500 µg/ml	GeneID (NCBI): 27236	CloneNo.: 2A10B3
Source: Mouse	UNIPROT ID: P53367	Recommended Dilutions: WB 1:1000-1:4000 IHC 1:200-1:800 IF 1:200-1:800
Isotype: IgG2a	Full Name: ADP-ribosylation factor interacting protein 1	
Immunogen Catalog Number: AG12097	Calculated MW: 373 aa, 42 kDa	
	Observed MW: 38-42 kDa	

Applications

Tested Applications:
FC, IF/ICC, IF-P, IHC, WB, ELISA

Species Specificity:
Human, mouse, rat

Note-IHC: suggested antigen retrieval with TE buffer pH 9.0; (*) Alternatively, antigen retrieval may be performed with citrate buffer pH 6.0

Positive Controls:

WB: HeLa cells, HSC-T6 cells, NIH/3T3 cells, 4T1 cells, RAW 264.7 cells, HepG2 cells, Jurkat cells

IHC: mouse kidney tissue,

IF: mouse kidney tissue, HeLa cells, A549 cells

Background Information

Storage

Storage:
Store at -20°C. Stable for one year after shipment.

Storage Buffer:
PBS with 0.02% sodium azide and 50% glycerol pH 7.3.

Aliquoting is unnecessary for -20°C storage

For technical support and original validation data for this product please contact:

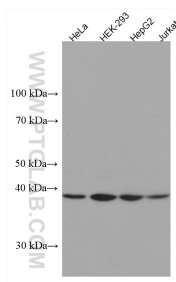
T: 4006900926

E: Proteintech-CN@ptglab.com

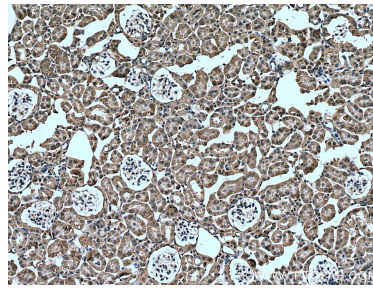
W: ptgcn.com

This product is exclusively available under Proteintech Group brand and is not available to purchase from any other manufacturer.

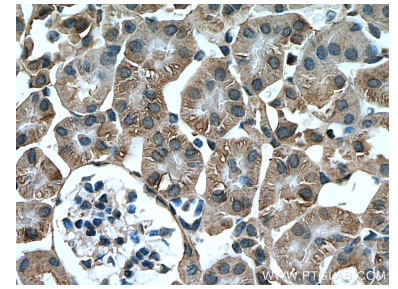
Selected Validation Data



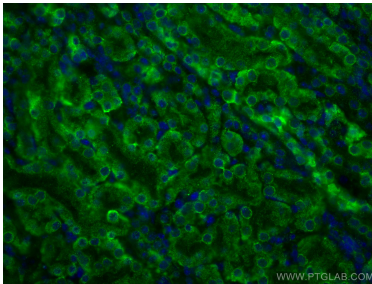
Various lysates were subjected to SDS PAGE followed by western blot with 67461-1-Ig (ARFIP1 antibody) at dilution of 1:3000 incubated at room temperature for 1.5 hours.



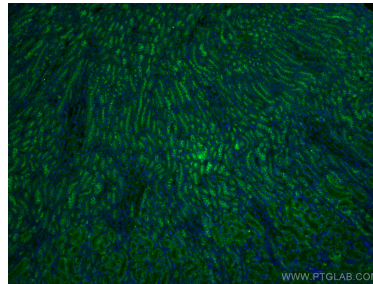
Immunohistochemical analysis of paraffin-embedded mouse kidney tissue slide using 67461-1-Ig (Arfaptin-1 antibody) at dilution of 1:400 (under 10x lens). Heat mediated antigen retrieval with Tris-EDTA buffer (pH 9.0).



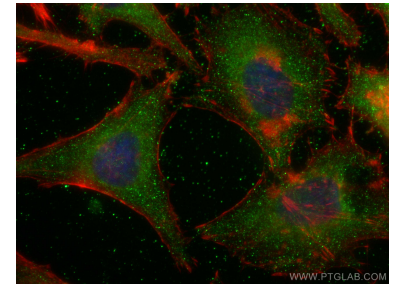
Immunohistochemical analysis of paraffin-embedded mouse kidney tissue slide using 67461-1-Ig (Arfaptin-1 antibody) at dilution of 1:400 (under 40x lens). Heat mediated antigen retrieval with Tris-EDTA buffer (pH 9.0).



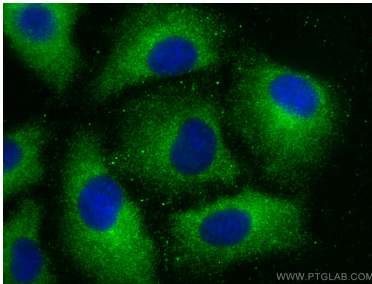
Immunofluorescent analysis of (4% PFA) fixed mouse kidney tissue using Arfaptin-1 antibody (67461-1-Ig, Clone: 2A10B3) at dilution of 1:400 and CoraLite@488-Conjugated AffiniPure Goat Anti-Mouse IgG(H+L).



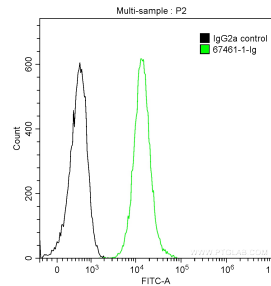
Immunofluorescent analysis of (4% PFA) fixed mouse kidney tissue using Arfaptin-1 antibody (67461-1-Ig, Clone: 2A10B3) at dilution of 1:400 and CoraLite@488-Conjugated AffiniPure Goat Anti-Mouse IgG(H+L).



Immunofluorescent analysis of (-20°C Ethanol) fixed HeLa cells using Arfaptin-1 antibody (67461-1-Ig, Clone: 2A10B3) at dilution of 1:800 and CoraLite@488-Conjugated AffiniPure Goat Anti-Mouse IgG(H+L), CL594-Phalloidin (red).



Immunofluorescent analysis of (-20°C Methanol) fixed A549 cells using Arfaptin-1 antibody (67461-1-Ig, Clone: 2A10B3) at dilution of 1:400 and CoraLite@488-Conjugated AffiniPure Goat Anti-Mouse IgG(H+L).



1X10⁶ Jurkat cells were intracellularly stained with 0.2 ug Anti-Human Arfaptin-1 (67461-1-Ig, Clone:2A10B3) and CoraLite@488-Conjugated AffiniPure Goat Anti-Mouse IgG(H+L) at dilution 1:1000 (green), and 0.2 ug Mouse IgG2a Isotype Control (66360-2-Ig, Clone: K11A1B2A2) (black). Cells were fixed with 90% MeOH.