

For Research Use Only

ATM Monoclonal antibody

Catalog Number: 67586-1-Ig **3 Publications**



Basic Information

Catalog Number: 67586-1-Ig	GenBank Accession Number: BC137169	Purification Method: Protein A purification
Size: 1500 µg/ml	GeneID (NCBI): 472	CloneNo.: 3E6F4
Source: Mouse	UNIPROT ID: Q13315	Recommended Dilutions: WB 1:1000-1:5000 IF 1:50-1:500
Isotype: IgG1	Full Name: ataxia telangiectasia mutated	
Immunogen Catalog Number: AG30001	Observed MW: 310-350 kDa	

Applications

Tested Applications: IF/ICC, WB, ELISA	Positive Controls:
Cited Applications: WB, IF	WB : HeLa cells, HSC-T6 cells, HEK-293 cells, HepG2 cells
Species Specificity: Human, Rat	IF : HeLa cells,
Cited Species: human, rat	

Background Information

The ATM protein is a member of the phosphatidylinositol 3-kinase family of proteins that respond to DNA damage by phosphorylating key substrates involved in DNA repair and/or cell cycle control. It is involved in mitogenic signal transduction, meiotic recombination, detection of DNA damage, and cell cycle control.

Notable Publications

Author	Pubmed ID	Journal	Application
Silu Hou	36427601	Food Chem Toxicol	WB
Jiajia Pan	38340163	J Mol Med (Berl)	WB
Qian Jiang	37287422	CNS Neurosci Ther	IF, WB

Storage

Storage:
Store at -20°C. Stable for one year after shipment.
Storage Buffer:
PBS with 0.02% sodium azide and 50% glycerol pH 7.3.
Aliquoting is unnecessary for -20°C storage

For technical support and original validation data for this product please contact:

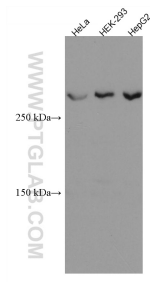
T: 4006900926

E: Proteintech-CN@ptglab.com

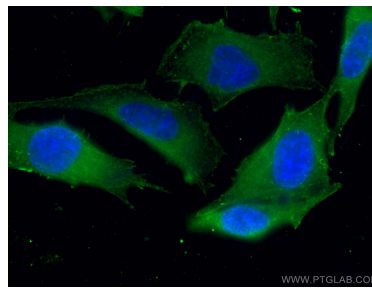
W: ptgcn.com

This product is exclusively available under Proteintech Group brand and is not available to purchase from any other manufacturer.

Selected Validation Data



Various lysates were subjected to SDS PAGE followed by western blot with 67586-1-Ig (ATM antibody) at dilution of 1:3000 incubated at room temperature for 1.5 hours.



Immunofluorescent analysis of (4% PFA) fixed HeLa cells using 67586-1-Ig (ATM antibody), at dilution of 1:200 and CoraLite®488-Conjugated AffiniPure Goat Anti-Mouse IgG(H+L).