

For Research Use Only

Ch-TOG Monoclonal antibody

Catalog Number: 67631-1-Ig



Basic Information

Catalog Number: 67631-1-Ig	GenBank Accession Number: BC120869	Purification Method: Protein G purification
Size: 1000 µg/ml	GeneID (NCBI): 9793	CloneNo.: 1H5G1
Source: Mouse	UNIPROT ID: Q14008	Recommended Dilutions: WB 1:5000-1:50000 IF 1:2000-1:8000
Isotype: IgG1	Full Name: cytoskeleton associated protein 5	
Immunogen Catalog Number: AG28770	Observed MW: 220-240 kDa	

Applications

Tested Applications: IF/ICC, WB, ELISA	Positive Controls:
Species Specificity: Human, mouse, rat, pig	WB : pig brain tissue, HeLa cells, HepG2 cells, NCCIT cells, rat brain tissue, mouse brain tissue
	IF : HepG2 cells,

Background Information

Ch-TOG (colonic hepatic tumor-overexpressed gene), also known as XMAP215 or CKAP5, is a microtubule polymerase which can promote cytoplasmic microtubule nucleation and elongation. Through interacting with Aurora-A and TACC3, it plays a major role in organizing spindle poles.

Storage

Storage:
Store at -20°C. Stable for one year after shipment.
Storage Buffer:
PBS with 0.02% sodium azide and 50% glycerol pH 7.3.
Aliquoting is unnecessary for -20°C storage

For technical support and original validation data for this product please contact:

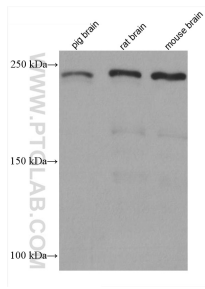
T: 4006900926

E: Proteintech-CN@ptglab.com

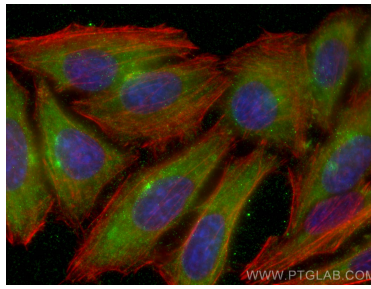
W: ptgcn.com

This product is exclusively available under Proteintech Group brand and is not available to purchase from any other manufacturer.

Selected Validation Data



Various lysates were subjected to SDS PAGE followed by western blot with 67631-1-Ig (CKAP5 antibody) at dilution of 1:10000 incubated at room temperature for 1.5 hours.



Immunofluorescent analysis of (-20°C Ethanol) fixed HepG2 cells using Ch-TOG antibody (67631-1-Ig, Clone: 1H5G1) at dilution of 1:4000 and CoraLite®488-Conjugated AffiniPure Goat Anti-Mouse IgG(H+L), CL594-Phalloidin (red).