

For Research Use Only

# BAT1 Monoclonal antibody

Catalog Number: 67641-1-Ig



## Basic Information

<b>Catalog Number:</b> 67641-1-Ig	<b>GenBank Accession Number:</b> BC000361	<b>Purification Method:</b> Protein G purification
<b>Size:</b> 1000 µg/ml	<b>GeneID (NCBI):</b> 7919	<b>CloneNo.:</b> 2G9H8
<b>Source:</b> Mouse	<b>UNIPROT ID:</b> Q13838	<b>Recommended Dilutions:</b> WB 1:5000-1:50000 IHC 1:500-1:2000
<b>Isotype:</b> IgG1	<b>Full Name:</b> HLA-B associated transcript 1	
<b>Immunogen Catalog Number:</b> AG6612	<b>Calculated MW:</b> 53 kDa	
	<b>Observed MW:</b> 50 kDa	

## Applications

### Tested Applications:

IHC, WB, ELISA

### Species Specificity:

Human, mouse, rat

**Note-IHC: suggested antigen retrieval with TE buffer pH 9.0; (\*) Alternatively, antigen retrieval may be performed with citrate buffer pH 6.0**

### Positive Controls:

WB : HeLa cells, HEK-293 cells, HepG2 cells, Jurkat cells, K-562 cells, NIH/3T3 cells, 4T1 cells

IHC : human breast cancer tissue,

## Background Information

DDX39B, is a 428 amino acid protein, which contains one helicase C-terminal domain, one helicase ATP-binding domain and belongs to the DEAD box helicase family. DECD subfamily. DDX39B localizes in the nucleus and cytoplasm. BAT1 is involved in nuclear export of spliced and unspliced mRNA. BAT1 as ATP dependent RNA helicase, may be a translation initiation factor and acts as a negative regulator of inflammatory cytokines. This antibody may cross-react with DDX39A.

## Storage

### Storage:

Store at -20°C. Stable for one year after shipment.

### Storage Buffer:

PBS with 0.02% sodium azide and 50% glycerol pH 7.3.

Aliquoting is unnecessary for -20°C storage

For technical support and original validation data for this product please contact:

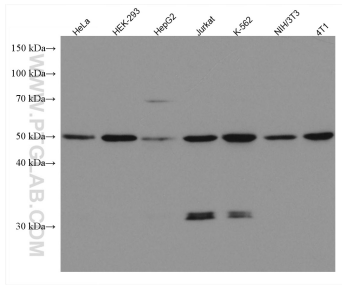
T: 4006900926

E: Proteintech-CN@ptglab.com

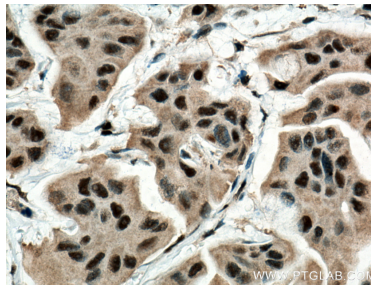
W: ptgcn.com

**This product is exclusively available under Proteintech Group brand and is not available to purchase from any other manufacturer.**

## Selected Validation Data



Various lysates were subjected to SDS PAGE followed by western blot with 67641-1-Ig (BAT1 antibody) at dilution of 1:10000 incubated at room temperature for 1.5 hours.



Immunohistochemical analysis of paraffin-embedded human breast cancer tissue slide using 67641-1-Ig (BAT1 antibody) at dilution of 1:1000 (under 40x lens). Heat mediated antigen retrieval with Tris-EDTA buffer (pH 9.0).