

NXF1 Monoclonal antibody

Catalog Number: 67914-1-Ig

Basic Information

Catalog Number: 67914-1-Ig	GenBank Accession Number: BC004904	Purification Method: Protein G purification
Size: 1000 µg/ml	GeneID (NCBI): 10482	CloneNo.: 2C2H1
Source: Mouse	UNIPROT ID: Q9UBU9	Recommended Dilutions: WB 1:2000-1:10000 IF 1:1000-1:4000
Isotype: IgG1	Full Name: nuclear RNA export factor 1	
Immunogen Catalog Number: AG27329	Calculated MW: 70 kDa	
	Observed MW: 67 kDa	

Applications

Tested Applications: IF/ICC, WB, ELISA	Positive Controls:
Species Specificity: Human	WB : HEK-293 cells, LNcaP cells, Hela cells, HepG2 cells, K-562 cells, Jurkat cells IF : HEK-293 cells,

Background Information

Nuclear RNA export factor 1 (NXF1, synonyms: TAP, MEX67) is one member of a family of nuclear RNA export factors. Common domain features of this family are a noncanonical RNP-type RNA-binding domain (RBD), 4 leucine-rich repeats (LRRs), a nuclear transport factor 2 (NTF2)-like domain that allows heterodimerization with NTF2-related export protein-1 (NXT1), and a ubiquitin-associated domain that mediates interactions with nucleoporins. The LRRs and NTF2-like domains are required for export activity. This protein shuttles between the nucleus and the cytoplasm and binds in vivo to poly(A)⁺ RNA. It is the vertebrate homologue of the yeast protein Mex67p. NXF1 overcomes the mRNA export block caused by the presence of saturating amounts of CTE (constitutive transport element) RNA of type D retroviruses.

Storage

Storage:
Store at -20°C. Stable for one year after shipment.
Storage Buffer:
PBS with 0.02% sodium azide and 50% glycerol pH 7.3.
Aliquoting is unnecessary for -20°C storage

For technical support and original validation data for this product please contact:

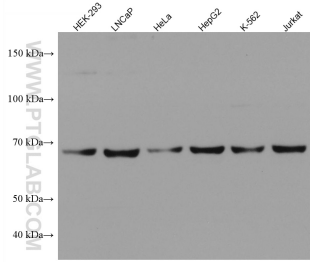
T: 4006900926

E: Proteintech-CN@ptglab.com

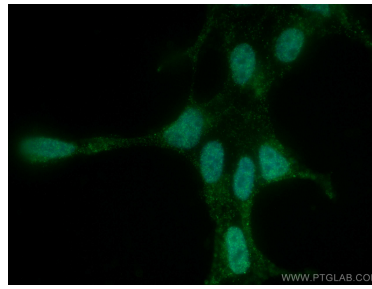
W: ptgcn.com

This product is exclusively available under Proteintech Group brand and is not available to purchase from any other manufacturer.

Selected Validation Data



Various lysates were subjected to SDS PAGE followed by western blot with 67914-1-Ig (NXF1 antibody) at dilution of 1:5000 incubated at room temperature for 1.5 hours.



Immunofluorescent analysis of (4% PFA) fixed HEK-293 cells using NXF1 antibody (67914-1-Ig, Clone: 2C2H1) at dilution of 1:2000 and CoraLite®488-Conjugated AffiniPure Goat Anti-Mouse IgG(H+L).