

For Research Use Only

ALDH1L1 Monoclonal antibody

Catalog Number: 68018-1-Ig



Basic Information

Catalog Number: 68018-1-Ig	GenBank Accession Number: BC027241	Purification Method: Protein G purification
Size: 500 µg/ml	GeneID (NCBI): 10840	CloneNo.: 1C1A3
Source: Mouse	UNIPROT ID: O75891	Recommended Dilutions: WB 1:5000-1:50000 IHC 1:16000-1:64000
Isotype: IgG1	Full Name: aldehyde dehydrogenase 1 family, member L1	
Immunogen Catalog Number: AG13190	Calculated MW: 99 kDa	
	Observed MW: 100 kDa	

Applications

Tested Applications:

IHC, WB, ELISA

Species Specificity:

Human, rat, mouse, pig

Note-IHC: suggested antigen retrieval with TE buffer pH 9.0; (*) Alternatively, antigen retrieval may be performed with citrate buffer pH 6.0

Positive Controls:

WB : human colostrum, pig liver tissue, rat liver tissue, mouse liver tissue

IHC : mouse brain tissue,

Background Information

Aldehyde dehydrogenase 1 family member L1 (ALDH1L1), belongs to the aldehyde dehydrogenase family of proteins and is responsible for formate oxidation in vivo. Loss of ALDH1L1 is associated with decreased apoptosis, increased cell motility, and cancer progression. ALDH1L1 catalyzes the conversion of 10-formyltetrahydrofolate, nicotinamide adenine dinucleotide phosphate (NADP⁺), and water to tetrahydrofolate, NADPH, and carbon dioxide. ALDH1L1 has some isoforms with MW of 99, 88 and 55 kDa.

Storage

Storage:

Store at -20°C.

Storage Buffer:

PBS with 0.02% sodium azide and 50% glycerol pH 7.3.

Aliquoting is unnecessary for -20°C storage

For technical support and original validation data for this product please contact:

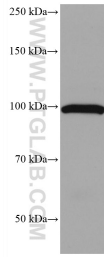
T: 4006900926

E: Proteintech-CN@ptglab.com

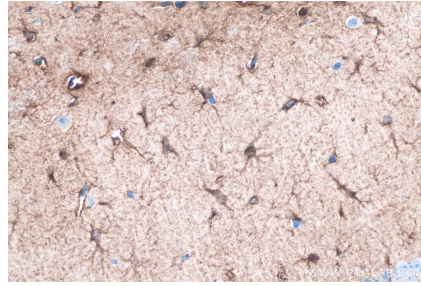
W: ptgcn.com

This product is exclusively available under Proteintech Group brand and is not available to purchase from any other manufacturer.

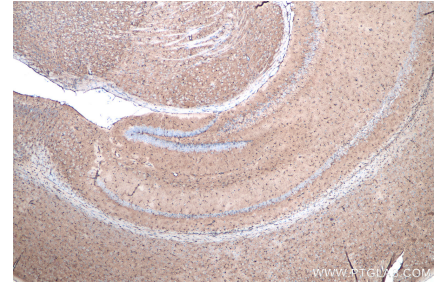
Selected Validation Data



human colostrum were subjected to SDS PAGE followed by western blot with 68018-1-Ig (ALDH1L1 antibody) at dilution of 1:20000 incubated at room temperature for 1.5 hours.



Immunohistochemical analysis of paraffin-embedded mouse brain tissue slide using 68018-1-Ig (ALDH1L1 antibody) at dilution of 1:32000 (under 40x lens). Heat mediated antigen retrieval with Tris-EDTA buffer (pH 9.0).



Immunohistochemical analysis of paraffin-embedded mouse brain tissue slide using 68018-1-Ig (ALDH1L1 antibody) at dilution of 1:32000 (under 4x lens). Heat mediated antigen retrieval with Tris-EDTA buffer (pH 9.0).