

For Research Use Only

# ZFP36L1 Monoclonal antibody

Catalog Number: 68038-1-Ig



## Basic Information

<b>Catalog Number:</b> 68038-1-Ig	<b>GenBank Accession Number:</b> BC018340	<b>Purification Method:</b> Protein A purification
<b>Size:</b> 1000 µg/ml	<b>GeneID (NCBI):</b> 677	<b>CloneNo.:</b> 1H6G6
<b>Source:</b> Mouse	<b>UNIPROT ID:</b> Q07352	<b>Recommended Dilutions:</b> WB 1:1000-1:6000 IF 1:200-1:800
<b>Isotype:</b> IgG2b	<b>Full Name:</b> zinc finger protein 36, C3H type-like 1	
<b>Immunogen Catalog Number:</b> AG30469	<b>Calculated MW:</b> 338 aa, 36 kDa	
	<b>Observed MW:</b> 36 kDa	

## Applications

<b>Tested Applications:</b> IF/ICC, WB, ELISA	<b>Positive Controls:</b>
<b>Species Specificity:</b> Human, Rat	<b>WB :</b> HUVEC cells, HSC-T6 cells, PC-12 cells, U2OS cells, A549 cells, HeLa cells
	<b>IF :</b> HepG2 cells,

## Background Information

As a member of the Tristetraprolin (TTP) RNA binding protein family, ZFP36L1 regulate gene expression post-transcriptionally by promoting mRNA decay. In mammals, ZFP36L1 and its family members have been shown to regulate development, cell differentiation, cell cycle, apoptosis and anti-cancer capability by targeting an extensive overlapping repertoire of mRNAs.

## Storage

**Storage:**  
Store at -20°C. Stable for one year after shipment.  
**Storage Buffer:**  
PBS with 0.02% sodium azide and 50% glycerol pH 7.3.  
Aliquoting is unnecessary for -20°C storage

For technical support and original validation data for this product please contact:

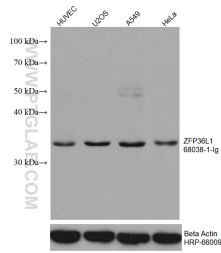
T: 4006900926

E: [Proteintech-CN@ptglab.com](mailto:Proteintech-CN@ptglab.com)

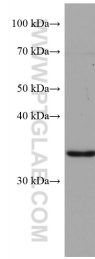
W: [ptgcn.com](http://ptgcn.com)

**This product is exclusively available under Proteintech Group brand and is not available to purchase from any other manufacturer.**

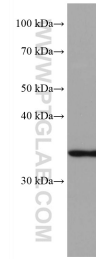
## Selected Validation Data



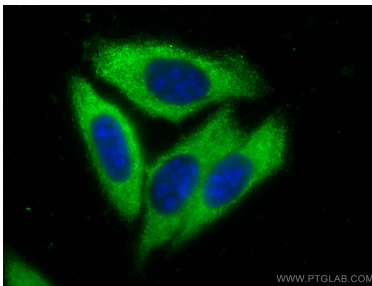
Various lysates were subjected to SDS PAGE followed by western blot with 68038-1-Ig (ZFP36L1 antibody) at dilution of 1:3000 incubated at room temperature for 1.5 hours. The membrane was stripped and reblotted with HRP-conjugated Beta Actin Monoclonal antibody (HRP-66009) as loading control.



HSC-T6 cells were subjected to SDS PAGE followed by western blot with 68038-1-Ig (ZFP36L1 antibody) at dilution of 1:3000 incubated at room temperature for 1.5 hours.



PC-12 cells were subjected to SDS PAGE followed by western blot with 68038-1-Ig (ZFP36L1 antibody) at dilution of 1:3000 incubated at room temperature for 1.5 hours.



Immunofluorescent analysis of (-20°C Ethanol) fixed HepG2 cells using ZFP36L1 antibody (68038-1-Ig, Clone: 1H6G6) at dilution of 1:400 and CoraLite®488-Conjugated AffiniPure Goat Anti-Mouse IgG(H+L).