

For Research Use Only

# MYDGF/C19orf10 Monoclonal antibody



Catalog Number: 68131-1-Ig

## Basic Information

|   |  |   |
|---|--|---|
| <b>Catalog Number:</b><br>68131-1-Ig        | <b>GenBank Accession Number:</b><br>BC010129             | <b>Purification Method:</b><br>Protein G purification                                     |
| <b>Size:</b><br>1000 µg/ml                  | <b>GeneID (NCBI):</b><br>56005                           | <b>CloneNo.:</b><br>1H8F4   |
| <b>Source:</b><br>Mouse                     | <b>UNIPROT ID:</b><br>Q969H8                             | <b>Recommended Dilutions:</b><br>WB 1:5000-1:50000<br>IHC 1:500-1:2000<br>IF 1:400-1:1600 |
| <b>Isotype:</b><br>IgG1                     | <b>Full Name:</b><br>chromosome 19 open reading frame 10 |   |
| <b>Immunogen Catalog Number:</b><br>AG13438 | <b>Calculated MW:</b><br>173 aa, 19 kDa                  |   |
|   | <b>Observed MW:</b><br>15-19 kDa                         |   |

## Applications

**Tested Applications:**  
FC, IF/ICC, IHC, WB, ELISA

**Species Specificity:**  
Human, Mouse, Rat

**Note-IHC: suggested antigen retrieval with TE buffer pH 9.0; (\*) Alternatively, antigen retrieval may be performed with citrate buffer pH 6.0**

**Positive Controls:**

**WB:** A549 cells, LNCaP cells, HeLa cells, HepG2 cells, Jurkat cells, K-562 cells, HSC-T6 cells, NIH/3T3 cells

**IHC:** human liver cancer tissue,

**IF:** HepG2 cells,

## Background Information

Myeloid-derived growth factor (MYDGF), also named as chromosome 19 open reading frame 10 (C19orf10), is an FLS-derived protein that is secreted into the synovial fluid. MYDGF as a paracrine-acting protein secreted from monocytes/macrophages that improves tissue repair and heart function after myocardial infarction. MYDGF has been reported to regulates neutrophil motility in interstitial tissue damage (PMID: 34047769).

## Storage

**Storage:**  
Store at -20°C. Stable for one year after shipment.  
**Storage Buffer:**  
PBS with 0.02% sodium azide and 50% glycerol pH 7.3.  
**Aliquoting is unnecessary for -20°C storage**

For technical support and original validation data for this product please contact:

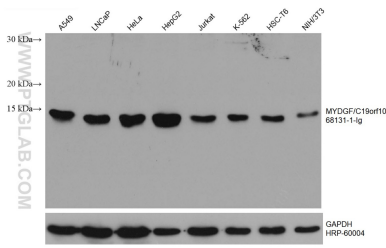
T: 4006900926

E: Proteintech-CN@ptglab.com

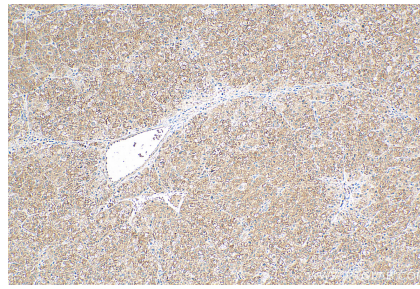
W: ptgcn.com

**This product is exclusively available under Proteintech Group brand and is not available to purchase from any other manufacturer.**

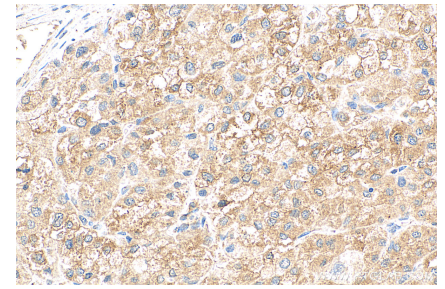
## Selected Validation Data



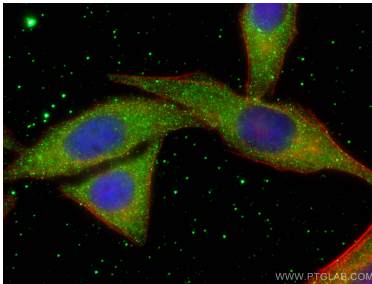
Various lysates were subjected to SDS PAGE followed by western blot with 68131-1-ig (MYDGF/C19orf10 antibody) at dilution of 1:10000 incubated at room temperature for 1.5 hours. The membrane was stripped and reblotted with HRP-conjugated GAPDH Monoclonal antibody (HRP-60004) as loading control.



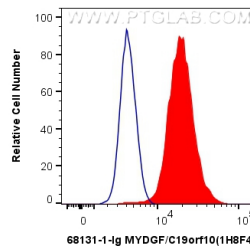
Immunohistochemical analysis of paraffin-embedded human liver cancer tissue slide using 68131-1-ig (MYDGF/C19orf10 antibody) at dilution of 1:1000 (under 10x lens). Heat mediated antigen retrieval with Tris-EDTA buffer (pH 9.0).



Immunohistochemical analysis of paraffin-embedded human liver cancer tissue slide using 68131-1-ig (MYDGF/C19orf10 antibody) at dilution of 1:1000 (under 40x lens). Heat mediated antigen retrieval with Tris-EDTA buffer (pH 9.0).



Immunofluorescent analysis of (-20°C Ethanol) fixed HepG2 cells using MYDGF/C19orf10 antibody (68131-1-ig, Clone: 1H8F4) at dilution of 1:800 and CoraLite@488-Conjugated AffiniPure Goat Anti-Mouse IgG(H+L), CL594-Phalloidin (red).



1X10<sup>6</sup> HepG2 cells were intracellularly stained with 0.4 ug Anti-Human MYDGF/C19orf10 (68131-1-ig, Clone:1H8F4) and CoraLite@488-Conjugated AffiniPure Goat Anti-Mouse IgG(H+L) at dilution 1:1000 (red), or 0.4 ug Mouse IgG1 Isotype Control (MOPC-21) (65124-1-ig, Clone: MOPC-21) (blue). Cells were fixed with 4% PFA and permeabilized with Flow Cytometry Perm Buffer (PF00011-C).