

For Research Use Only

IGFBP3 Monoclonal antibody

Catalog Number: 68402-1-Ig



Basic Information

Catalog Number:

68402-1-Ig

Size:

500 µg/ml

Source:

Mouse

Isotype:

IgM

Immunogen Catalog Number:

AG20351

GenBank Accession Number:

BC000013

GeneID (NCBI):

3486

UNIPROT ID:

P17936

Full Name:

insulin-like growth factor binding protein 3

Calculated MW:

32 kDa

Observed MW:

39-45 kDa

Purification Method:

Caprylic acid/ammonium sulfate precipitation

CloneNo.:

1A12A11

Recommended Dilutions:

WB 1:2000-1:10000

IHC 1:250-1:1000

Applications

Tested Applications:

IHC, WB, ELISA

Species Specificity:

Human

Note-IHC: suggested antigen retrieval with TE buffer pH 9.0; (*) Alternatively, antigen retrieval may be performed with citrate buffer pH 6.0

Positive Controls:

WB : A549 cells, human placenta tissue, Caco-2 cells

IHC : human placenta tissue,

Background Information

Insulin-like growth factor binding protein-3 (IGFBP-3) contains a 27 amino acid putative signal sequence followed by a mature protein of 264 amino acids with 18 cysteine residues clustered near the N- and C-terminus. Accordingly, expression of the cloned IGFBP-3 cDNA in mammalian tissue culture cells results in secretion of the protein into the culture medium. IGFBP-3 shares high homology (33% amino acid identity) including conservation of all 18 cysteine residues with a smaller human IGF-binding protein (BP-28) identified in amniotic fluid. IGFBP-3 has one or more glycosylation sites with a protein core of 30 kDa. Western blots revealed that the 39-45 kDa IGFBP-3 fragment is a glycoprotein. (PMID: 23403918, PMID: 24926947, PMID: 19887447)

Storage

Storage:

Store at -20°C. Stable for one year after shipment.

Storage Buffer:

PBS with 0.02% sodium azide and 50% glycerol pH 7.3.

Aliquoting is unnecessary for -20°C storage

For technical support and original validation data for this product please contact:

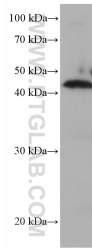
T: 4006900926

E: Proteintech-CN@ptglab.com

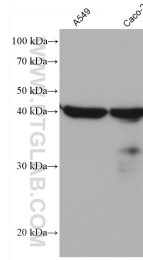
W: ptgcn.com

This product is exclusively available under Proteintech Group brand and is not available to purchase from any other manufacturer.

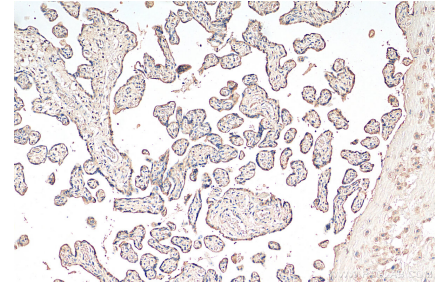
Selected Validation Data



human placenta tissue were subjected to SDS PAGE followed by western blot with 68402-1-Ig (IGFBP3 antibody) at dilution of 1:5000 incubated at room temperature for 1.5 hours.



Various lysates were subjected to SDS PAGE followed by western blot with 68402-1-Ig (IGFBP3 antibody) at dilution of 1:5000 incubated at room temperature for 1.5 hours.



Immunohistochemical analysis of paraffin-embedded human placenta tissue slide using 68402-1-Ig (IGFBP3 antibody) at dilution of 1:500 (under 10x lens). Heat mediated antigen retrieval with Tris-EDTA buffer (pH 9.0).