

For Research Use Only

Beta Tubulin Recombinant antibody



Catalog Number: 80713-1-RR **1 Publications**

Basic Information

Catalog Number:

80713-1-RR

Size:

500 µg/ml

Source:

Rabbit

Isotype:

IgG

Immunogen Catalog Number:

AG0117

GenBank Accession Number:

BC000748

GeneID (NCBI):

10381

UNIPROT ID:

Q13509

Full Name:

tubulin, beta 3

Calculated MW:

450 aa, 50 kDa

Observed MW:

50-55 kDa

Purification Method:

Protein A purification

CloneNo.:

2013

Recommended Dilutions:

WB 1:5000-1:50000

IP 0.5-4.0 µg for 1.0-3.0 mg of total protein lysate

IF 1:250-1:1000

Applications

Tested Applications:

FC, IF/ICC, IP, WB, ELISA

Cited Applications:

IF

Species Specificity:

Human, mouse, rat, zebrafish

Cited Species:

human

Positive Controls:

WB : HeLa cells, zebrafish tissue, HEK-293 cells, Jurkat cells, K-562 cells, Hsc-T6 cells, NIH/3T3 cells, mouse brain, rat brain

IP : HEK-293 cells,

IF : C2C12 cells, HeLa cells

Background Information

Notable Publications

Author	Pubmed ID	Journal	Application
Hidetaka Togo	36672213	Cells	IF

Storage

Storage:

Store at -20°C. Stable for one year after shipment.

Storage Buffer:

PBS with 0.02% sodium azide and 50% glycerol pH 7.3.

Aliquoting is unnecessary for -20°C storage

For technical support and original validation data for this product please contact:

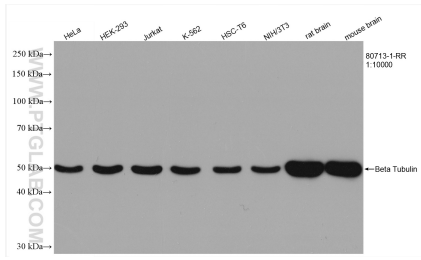
T: 4006900926

E: Proteintech-CN@ptglab.com

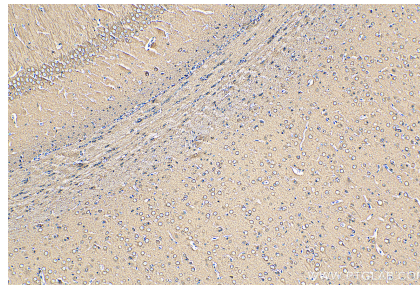
W: ptgcn.com

This product is exclusively available under Proteintech Group brand and is not available to purchase from any other manufacturer.

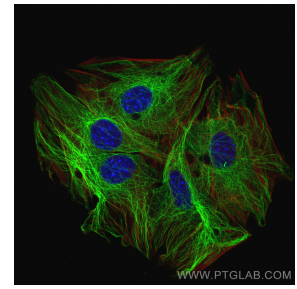
Selected Validation Data



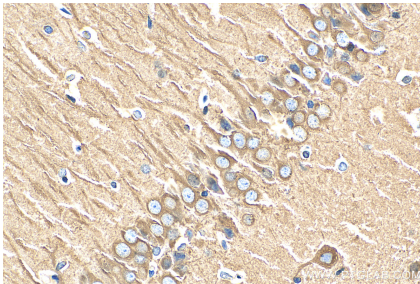
Various lysates were subjected to SDS PAGE followed by western blot with 80713-1-RR (Beta Tubulin antibody) at dilution of 1:10000 incubated at room temperature for 1.5 hours.



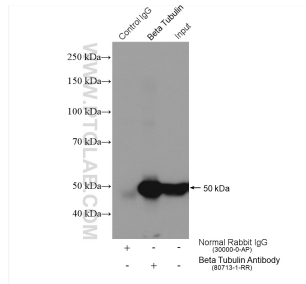
Immunohistochemical analysis of paraffin-embedded rat brain tissue slide using 80713-1-RR (Beta Tubulin antibody) at dilution of 1:1000 (under 10x lens). Heat mediated antigen retrieval with Tris-EDTA buffer (pH 9.0).



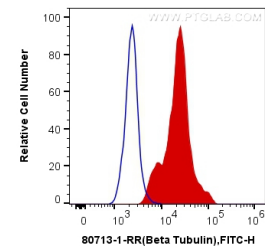
Immunofluorescent analysis of (4% PFA) fixed C2C12 cells using Beta Tubulin antibody (80713-1-RR, Clone: 2013) at dilution of 1:500 and CoraLite®488-Conjugated AffiniPure Goat Anti-Rabbit IgG(H+L), CL594-Phalloidin (red).



Immunohistochemical analysis of paraffin-embedded rat brain tissue slide using 80713-1-RR (Beta Tubulin antibody) at dilution of 1:1000 (under 40x lens). Heat mediated antigen retrieval with Tris-EDTA buffer (pH 9.0).



IP result of anti-Beta Tubulin (IP:80713-1-RR, 4ug; Detection:66240-1-Ig 1:10000) with HEK-293 cells lysate 1360 ug.



1x10⁶ HEK-293 cells were intracellularly stained with 0.2 ug Anti-Human Beta Tubulin (80713-1-RR, Clone:2013) and CoraLite®488-Conjugated AffiniPure Goat Anti-Rabbit IgG(H+L) at dilution 1:1000 (red), or 0.2 ug Control Antibody. Cells were fixed with 4% PFA and permeabilized with Flow Cytometry Perm Buffer (PF00011-C).