

For Research Use Only

BCL6 Recombinant antibody

Catalog Number: 81754-1-RR



Basic Information

Catalog Number: 81754-1-RR	GenBank Accession Number: BC150184	Purification Method: Protein A purification
Size: 1000 µg/ml	GeneID (NCBI): 604	CloneNo.: 3K6
Source: Rabbit	UNIPROT ID: P41182	Recommended Dilutions: WB 1:5000-1:50000 IP 0.5-4.0 µg for 1.0-3.0 mg of total protein lysate IHC 1:500-1:2000
Isotype: IgG	Full Name: B-cell CLL/lymphoma 6	
Immunogen Catalog Number: AG15519	Calculated MW: 706 aa, 79 kDa	
	Observed MW: 79-95 kDa	

Applications

Tested Applications:
FC, IHC, IP, WB, ELISA

Species Specificity:
Human

Note-IHC: suggested antigen retrieval with TE buffer pH 9.0; (*) Alternatively, antigen retrieval may be performed with citrate buffer pH 6.0

Positive Controls:

WB : Ramos cells, Daudi cells

IP : Ramos cells,

IHC : human tonsillitis tissue,

Background Information

BCL6, a zinc finger transcription factor, contains an N-terminal BTB/POZ domain and C-terminal zinc finger DNA-binding motifs and represses transcription of a wide range of target proteins and microRNAs. BCL6 protein has been reported as a master regulator of B lymphocyte development and growth, and altered BCL6 protein expression was implicated in pathogenesis of diverse human hematologic malignancies, especially in the diffuse large B cell lymphoma (DLBCL). BCL6 is required for the development of T follicular helper T cells (TFH), a helper T cell subset required for the formation of mature and productive GCs. BCL6 has also been shown to play important regulatory roles in macrophages.

Storage

Storage:
Store at -20°C. Stable for one year after shipment.
Storage Buffer:
PBS with 0.02% sodium azide and 50% glycerol pH 7.3.
Aliquoting is unnecessary for -20°C storage

For technical support and original validation data for this product please contact:

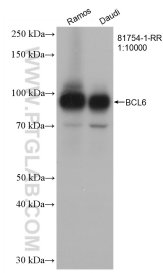
T: 4006900926

E: Proteintech-CN@ptglab.com

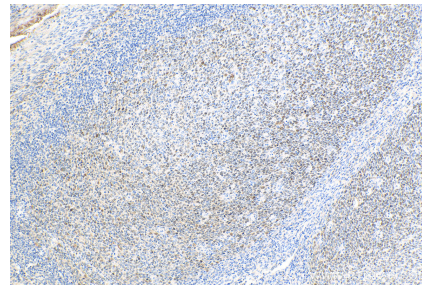
W: ptgcn.com

This product is exclusively available under Proteintech Group brand and is not available to purchase from any other manufacturer.

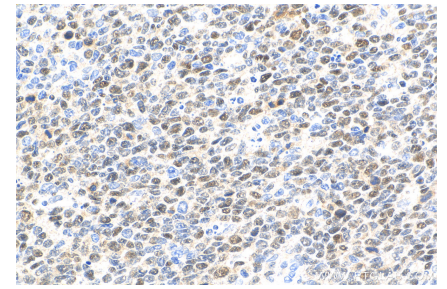
Selected Validation Data



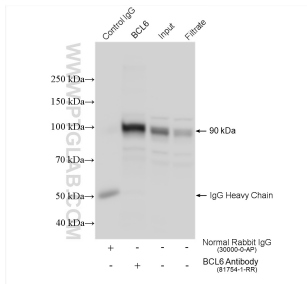
Various lysates were subjected to SDS PAGE followed by western blot with 81754-1-RR (BCL6 antibody) at dilution of 1:10000 incubated at room temperature for 1.5 hours.



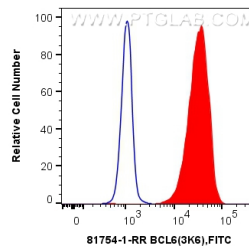
Immunohistochemical analysis of paraffin-embedded human tonsillitis tissue slide using 81754-1-RR (BCL6 antibody) at dilution of 1:1000 (under 10x lens). Heat mediated antigen retrieval with Tris-EDTA buffer (pH 9.0).



Immunohistochemical analysis of paraffin-embedded human tonsillitis tissue slide using 81754-1-RR (BCL6 antibody) at dilution of 1:1000 (under 40x lens). Heat mediated antigen retrieval with Tris-EDTA buffer (pH 9.0).



IP result of anti-BCL6 (IP:81754-1-RR, 4ug; Detection:81754-1-RR 1:8000) with Ramos cells lysate 1680 ug.



1×10^6 Ramos cells were intracellularly stained with 0.2 ug Anti-Human BCL6 (81754-1-RR, Clone:3K6) and CoraLite[®]488-Conjugated AffiniPure Goat Anti-Rabbit IgG(H+L) at dilution 1:1000 (red), or 0.2 ug Control Antibody. Cells were fixed with 4% PFA and permeabilized with Flow Cytometry Perm Buffer (PF00011-C).