

For Research Use Only

CoraLite® Plus 405 Mouse IgG1 Isotype Control (MOPC-21)



Catalog Number: **CL405-65124**

Basic Information

Catalog Number: CL405-65124	GenBank Accession Number: GeneID (NCBI): 16017	Purification Method: Affinity purification
Size: 100ug, 0.5 mg/ml	UNIPROT ID: P01868	CloneNo.: MOPC-21
Source: Mouse	Full Name: immunoglobulin heavy constant gamma 1 (G1m marker)	Excitation/Emission maxima wavelengths: 399 nm / 422 nm
Isotype: IgG1		

Applications

Tested Applications:
FC
Species Specificity:

Background Information

The MOPC-21 immunoglobulin is useful as an isotype-matched control. The MOPC-21 immunoglobulin has an unknown binding specificity and is used as an isotype control for mouse IgG1 antibodies. This antibody has been quality-tested for flow cytometry as negative control.

Storage

Storage:
Store at 2-8°C. Avoid exposure to light. Stable for one year after shipment.
Storage Buffer:
PBS with 0.09% sodium azide.

For technical support and original validation data for this product please contact:

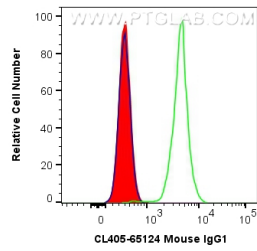
T: 4006900926

E: Proteintech-CN@ptglab.com

W: ptgcn.com

This product is exclusively available under Proteintech Group brand and is not available to purchase from any other manufacturer.

Selected Validation Data



1X10⁶ rat splenocytes cells were surface stained with 0.5 ug CoraLite® Plus 405 Mouse IgG1 Isotype Control (CL405-65124, Clone:MOPC-21) (red), or 0.5 ug CoraLite® Plus 405 Anti-Rat CD45 (green) or unstained (blue). Cells were not fixed.