

For Research Use Only

# CoraLite® Plus 488-conjugated CDK4 Polyclonal antibody



Catalog Number: CL488-11026

Featured Product

## Basic Information

Catalog Number:

CL488-11026

Size:

1000 µg/ml

Source:

Rabbit

Isotype:

IgG

Immunogen Catalog Number:

AG1505

GenBank Accession Number:

BC010153

GeneID (NCBI):

1019

UNIPROT ID:

P11802

Full Name:

cyclin-dependent kinase 4

Calculated MW:

34 kDa

Observed MW:

34 kDa

Purification Method:

Antigen affinity purification

Recommended Dilutions:

IF 1:50-1:500

Excitation/Emission maxima  
wavelengths:

493 nm / 522 nm

## Applications

Tested Applications:

FC, IF/ICC

Species Specificity:

human, mouse, rat

Positive Controls:

IF : MCF-7 cells,

## Background Information

Cyclin-dependent kinase-4 (CDK4) is a protein-serine kinase involved in the cell cycle. It is essential for the G1- to S-phase transition during the cell cycle and its expression is primarily controlled at the transcriptional level (PMID:17253961). CCND1-CDK4 axis is not only critical in glial tumor cells but also in stromal-derived cells in the surrounding tumor microenvironment that are vital to sustain tumor outgrowth (PMID:21844184).

## Storage

Storage:

Store at -20°C. Avoid exposure to light. Stable for one year after shipment.

Storage Buffer:

PBS with 50% Glycerol, 0.05% Proclin300, 0.5% BSA, pH 7.3.

Aliquoting is unnecessary for -20°C storage

For technical support and original validation data for this product please contact:

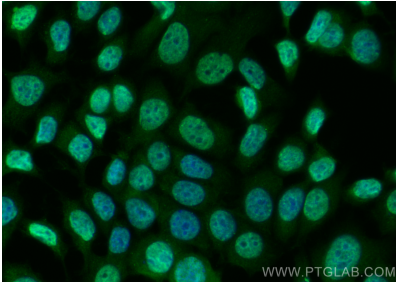
T: 4006900926

E: [Proteintech-CN@ptglab.com](mailto:Proteintech-CN@ptglab.com)

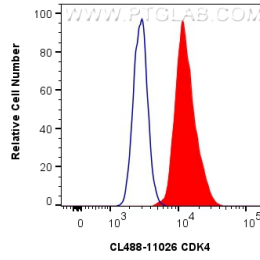
W: [ptgcn.com](http://ptgcn.com)

This product is exclusively available under Proteintech Group brand and is not available to purchase from any other manufacturer.

## Selected Validation Data



Immunofluorescent analysis of (4% PFA) fixed MCF-7 cells using CoraLite® Plus 488 CDK4 antibody (CL488-11026) at dilution of 1:200.



1X10<sup>6</sup> HeLa cells were intracellularly stained with 0.4 ug CoraLite® Plus 488 Anti-Human CDK4 (CL488-11026) (red), or 0.4 ug CoraLite® Plus 488-conjugated Rabbit IgG control Rabbit PolyAb (CL488-30000, Clone: ) (blue). Cells were fixed and permeabilized with True-Nuclear Transcription Factor Buffer Set.