

For Research Use Only

# CoraLite® Plus 488-conjugated IFT81 Polyclonal antibody



Catalog Number: CL488-11744

Featured Product

## Basic Information

Catalog Number:

CL488-11744

Size:

1000 µg/ml

Source:

Rabbit

Isotype:

IgG

Immunogen Catalog Number:

AG2339

GenBank Accession Number:

BC029349

GeneID (NCBI):

28981

UNIPROT ID:

Q8WYAO

Full Name:

intraflagellar transport 81 homolog  
(Chlamydomonas)

Calculated MW:

676 aa, 80 kDa

Observed MW:

75-80 kDa

Purification Method:

Antigen affinity purification

Recommended Dilutions:

IF/ICC 1:50-1:500

Excitation/Emission maxima  
wavelengths:

493 nm / 522 nm

## Applications

Tested Applications:

IF/ICC

Species Specificity:

human, canine

Positive Controls:

IF/ICC : hTERT-RPE1 cells, MDCK cells

## Background Information

Intraflagellar transport (IFT), mediated by molecular motors and IFT particles, is an important transport process that occurs in the cilium and has been shown to be essential for the assembly and maintenance of cilia and flagella in many organisms. IFT particles are multi-subunit complexes of proteins that function to move non-membrane-bound particles from the cell body to the tip of cilium or flagellum, then return them to the cell body. Transport towards the ciliary tip is regulated by the IFT complex B (IFT-B), consisting of at least 15 IFT proteins, in association with kinesin motors, whereas transport from the ciliary tip back to the base is executed by a dynein motor in association with the IFT complex A (IFT-A), currently known to be composed of six IFT proteins. IFT81 is a subunit of IFT complex B. It may play a role in development of the testis and spermatogenesis. There are some isoforms of IFT81 with 73-78 kDa and 43-50 kDa.

## Storage

Storage:

Store at -20°C. Avoid exposure to light. Stable for one year after shipment.

Storage Buffer:

PBS with 50% Glycerol, 0.05% Proclin300, 0.5% BSA, pH 7.3.

Aliquoting is unnecessary for -20°C storage

For technical support and original validation data for this product please contact:

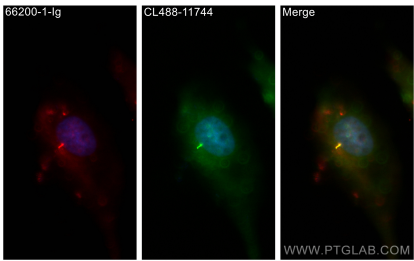
T: 4006900926

E: [Proteintech-CN@ptglab.com](mailto:Proteintech-CN@ptglab.com)

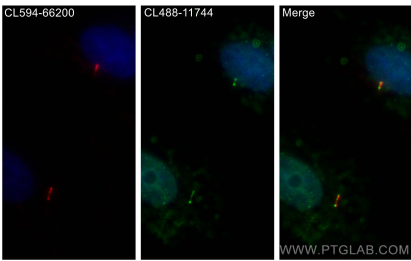
W: [ptgcn.com](http://ptgcn.com)

This product is exclusively available under Proteintech Group brand and is not available to purchase from any other manufacturer.

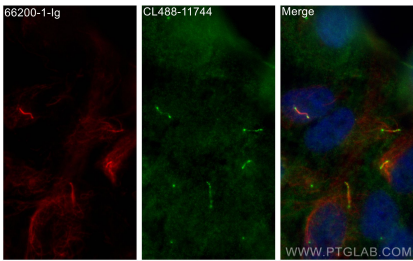
Selected Validation Data



Immunofluorescent analysis of (4% PFA) fixed MDCK cells using CoraLite® Plus 488 IFT81 antibody (CL488-11744) at dilution of 1:200, acetylated Tubulin(Lys40) antibody (66200-1-Ig, Clone: 7E5H8, red).



Immunofluorescent analysis of (4% PFA) fixed MDCK cells using CoraLite® Plus 488 IFT81 antibody (CL488-11744) at dilution of 1:50, CoraLite® 594 acetylated Tubulin(Lys40) antibody (CL594-66200, Clone: 7E5H8, red).



Immunofluorescent analysis of (4% PFA) fixed hTERT-RPE1 cells using CoraLite® Plus 488 IFT81 antibody (CL488-11744) at dilution of 1:200, acetylated Tubulin(Lys40) antibody (66200-1-Ig, Clone: 7E5H8, red).