

For Research Use Only

CoraLite® Plus 488-conjugated Cyclin E2 Polyclonal antibody



Catalog Number: CL488-11935

Basic Information

Catalog Number: CL488-11935	GenBank Accession Number: BC020729	Purification Method: Antigen affinity purification
Size: 1000 µg/ml	GeneID (NCBI): 9134	Recommended Dilutions: IF 1:50-1:500
Source: Rabbit	UNIPROT ID: O96020	Excitation/Emission maxima wavelengths: 493 nm / 522 nm
Isotype: IgG	Full Name: cyclin E2	
Immunogen Catalog Number: AG2532	Calculated MW: 374 aa, 44 kDa	

Applications

Tested Applications: FC (Intra), IF/ICC	Positive Controls: IF : HeLa cells,
Species Specificity: human	

Background Information

Cyclin E2 (CCNE2) belongs to the highly conserved cyclin family, whose members are characterized by a dramatic periodicity in protein abundance throughout the cell cycle. Cyclins function as regulators of cyclin-dependent kinases (CDKs). Different cyclins exhibit distinct expression and degradation patterns which contribute to the temporal coordination of cell cycle events. CCNE2 forms a complex with and functions as a regulatory subunit of CDK2 and has been shown to specifically interact with CIP/KIP family of CDK inhibitors. CCNE2 plays a role in cell cycle G1/S transition and its expression peaks at the G1-S phase. Whereas cyclin E1 is expressed in most proliferating normal and tumor cells, cyclin E2 levels are low or undetectable in nontransformed cells, and are elevated in tumor-derived cells.

Storage

Storage:
Store at -20°C. Avoid exposure to light.
Storage Buffer:
PBS with 50% Glycerol, 0.05% Proclin300, 0.5% BSA, pH 7.3.
Aliquoting is unnecessary for -20°C storage

For technical support and original validation data for this product please contact:

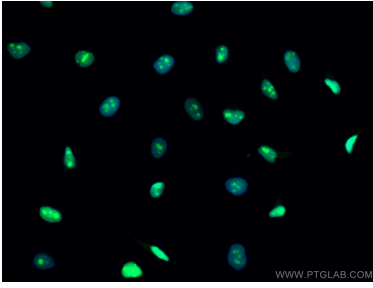
T: 4006900926

E: Proteintech-CN@ptglab.com

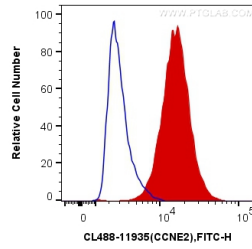
W: ptgcn.com

This product is exclusively available under Proteintech Group brand and is not available to purchase from any other manufacturer.

Selected Validation Data



Immunofluorescent analysis of (4% PFA) fixed HeLa cells using CoraLite® Plus 488 Cyclin E2 antibody (CL488-11935) at dilution of 1:100.



1×10^6 HeLa cells were intracellularly stained with 0.4 ug CoraLite® Plus 488 Anti-Human Cyclin E2 (CL488-11935) (red), or 0.4 ug Control Antibody. Cells were fixed and permeabilized with Transcription Factor Staining Buffer Kit (PF00011).