

For Research Use Only

CoraLite® Plus 488-conjugated CCPG1 Polyclonal antibody



Catalog Number: CL488-13861

Featured Product

Basic Information

Catalog Number:

CL488-13861

Size:

1000 µg/ml

Source:

Rabbit

Isotype:

IgG

Immunogen Catalog Number:

AG4841

GenBank Accession Number:

BC034914

GeneID (NCBI):

9236

UNIPROT ID:

Q9ULG6

Full Name:

cell cycle progression 1

Calculated MW:

87 kDa

Observed MW:

110 kDa

Purification Method:

Antigen affinity purification

Recommended Dilutions:

IF 1:50-1:500

Excitation/Emission maxima
wavelengths:

493 nm / 522 nm

Applications

Tested Applications:

IF/ICC

Species Specificity:

human

Positive Controls:

IF : HepG2 cells,

Background Information

Cell-cycle progression gene 1 (CCPG1) is a receptor for ER stress-induced ER-phagy. CCPG1 localizes to perinuclear ER and in small foci at the ER periphery. It contains a LIR at the N-terminal cytosolic domain engaging LC3/GABARAP. (PMID: 29802216, PMID: 29290589)

Storage

Storage:

Store at -20°C. Avoid exposure to light. Stable for one year after shipment.

Storage Buffer:

PBS with 50% Glycerol, 0.05% Proclin300, 0.5% BSA, pH 7.3.

Aliquoting is unnecessary for -20°C storage

For technical support and original validation data for this product please contact:

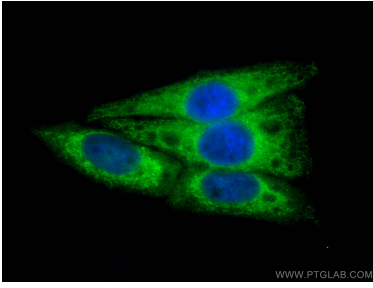
T: 4006900926

E: Proteintech-CN@ptglab.com

W: ptgcn.com

This product is exclusively available under Proteintech Group brand and is not available to purchase from any other manufacturer.

Selected Validation Data



Immunofluorescent analysis of (4% PFA) fixed HepG2 cells using Coralite® Plus 488 CCPG1 antibody (CL488-13861) at dilution of 1:200.