

For Research Use Only

CoraLite® Plus 488-conjugated LDHA-Specific Polyclonal antibody



Catalog Number: CL488-19987

Featured Product

Basic Information

Catalog Number:

CL488-19987

Size:

1000 µg/ml

Source:

Rabbit

Isotype:

IgG

GenBank Accession Number:

NM_005566

GeneID (NCBI):

3939

UNIPROT ID:

P00338

Full Name:

lactate dehydrogenase A

Calculated MW:

37 kDa

Observed MW:

32-37 kDa

Purification Method:

Antigen affinity purification

Recommended Dilutions:

IF 1:50-1:500

Excitation/Emission maxima
wavelengths:

493 nm / 522 nm

Applications

Tested Applications:

FC (Intra), IF/ICC

Species Specificity:

human, mouse, rat

Positive Controls:

IF : HepG2 cells,

Background Information

Lactate dehydrogenase (LDH) is composed of A subunits predominate in skeletal muscle and B subunits are abundantly produced in brain and heart. The LDHA (lactate dehydrogenase A) and COPB1 (coatomer protein complex, subunit beta 1) genes, are involved in energy metabolism and protein transport processes. Both genes might play important roles in muscle development. It has some isoforms with the molecular mass of 27-40 kDa and can form a homotetramer (PMID:11276087). This antibody is specific to LDHA and has no cross reaction to LDHB and LDHC.

Storage

Storage:

Store at -20°C. Avoid exposure to light.

Storage Buffer:

PBS with 50% Glycerol, 0.05% Proclin300, 0.5% BSA, pH 7.3.

Aliquoting is unnecessary for -20°C storage

For technical support and original validation data for this product please contact:

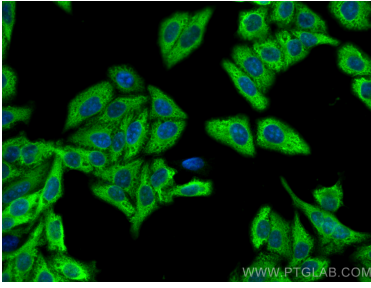
T: 4006900926

E: Proteintech-CN@ptglab.com

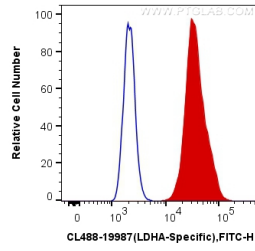
W: ptgcn.com

This product is exclusively available under Proteintech Group brand and is not available to purchase from any other manufacturer.

Selected Validation Data



Immunofluorescent analysis of (-20°C Methanol) fixed HepG2 cells using CoraLite® Plus 488 LDHA-Specific antibody (CL488-19987) at dilution of 1:200.



1X10⁶ HepG2 cells were intracellularly stained with 0.4 ug CoraLite® Plus 488 Anti-Human LDHA-Specific (CL488-19987) (red), or 0.4 ug Control Antibody. Cells were fixed with 4% PFA and permeabilized with Flow Cytometry Perm Buffer (PF00011-C).