

For Research Use Only

CoraLite® Plus 488-conjugated Alpha Actin Polyclonal antibody



Catalog Number: CL488-23660

Basic Information

Catalog Number:

CL488-23660

Size:

1000 µg/ml

Source:

Rabbit

Isotype:

IgG

Immunogen Catalog Number:

AG19151

GenBank Accession Number:

BC012597

GeneID (NCBI):

58

UNIPROT ID:

P68133

Full Name:

actin, alpha 1, skeletal muscle

Calculated MW:

42 kDa

Observed MW:

40-42 kDa

Purification Method:

Antigen affinity purification

Recommended Dilutions:

IF 1:50-1:500

Excitation/Emission maxima
wavelengths:

493 nm / 522 nm

Applications

Tested Applications:

IF/ICC

Species Specificity:

mouse, rat

Positive Controls:

IF : H9C2 cells, C2C12 cells

Background Information

Storage

Storage:

Store at -20°C. Avoid exposure to light. Stable for one year after shipment.

Storage Buffer:

PBS with 50% Glycerol, 0.05% Proclin300, 0.5% BSA, pH 7.3.

Aliquoting is unnecessary for -20°C storage

For technical support and original validation data for this product please contact:

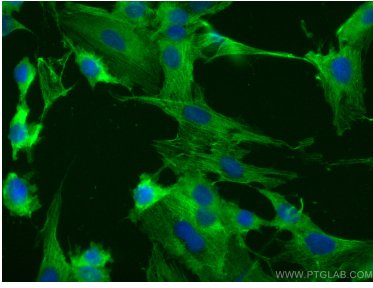
T: 4006900926

E: Proteintech-CN@ptglab.com

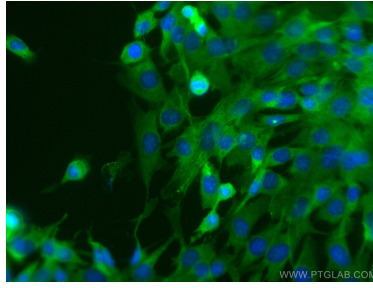
W: ptgcn.com

This product is exclusively available under Proteintech Group brand and is not available to purchase from any other manufacturer.

Selected Validation Data



Immunofluorescent analysis of (-20°C Methanol) fixed H9C2 cells using CoraLite® Plus 488 Alpha Actin antibody (CL488-23660) at dilution of 1:200.



Immunofluorescent analysis of (-20°C Methanol) fixed C2C12 cells using CoraLite® Plus 488 Alpha Actin antibody (CL488-23660) at dilution of 1:200.