

For Research Use Only

CoraLite® Plus 488-conjugated YTHDF2 Polyclonal antibody



Catalog Number: CL488-24744

Featured Product

Basic Information

Catalog Number:

CL488-24744

Size:

1000 µg/ml

Source:

Rabbit

Isotype:

IgG

Immunogen Catalog Number:

AG5922

GenBank Accession Number:

BC002559

GeneID (NCBI):

51441

UNIPROT ID:

Q9Y5A9

Full Name:

YTH domain family, member 2

Calculated MW:

62 kDa

Observed MW:

62 kDa

Purification Method:

Antigen affinity purification

Excitation/Emission maxima
wavelengths:

493 nm / 522 nm

Applications

Tested Applications:

FC (Intra)

Species Specificity:

human, mouse, rat

Background Information

YTHDF2 also named as CLL associated antigen KW 14 or HGRG8 is a 579 amino acid protein, which contains one YTH domain and exists as two alternatively spliced isoforms. YTHDF2 is expressed in in pancreas, testis and placenta. YTHDF2 may play a role in human longevity.

Storage

Storage:

Store at -20°C. Avoid exposure to light.

Storage Buffer:

PBS with 50% Glycerol, 0.05% Proclin300, 0.5% BSA, pH 7.3.

Aliquoting is unnecessary for -20°C storage

For technical support and original validation data for this product please contact:

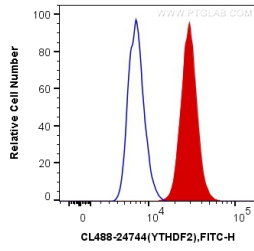
T: 4006900926

E: Proteintech-CN@ptglab.com

W: ptgcn.com

This product is exclusively available under Proteintech Group brand and is not available to purchase from any other manufacturer.

Selected Validation Data



1X10⁶ HeLa cells were intracellularly stained with 0.4 ug CoraLite® Plus 488 Anti-Human YTHDF2 (CL488-24744) (red), or 0.4 ug Control Antibody. Cells were fixed with 4% PFA and permeabilized with Flow Cytometry Perm Buffer (PF00011-C).