

For Research Use Only

CoraLite® Plus 488-conjugated F4/80 Polyclonal antibody



Catalog Number:CL488-28463

Basic Information

Catalog Number:

CL488-28463

Size:

1000 µg/ml

Source:

Rabbit

Isotype:

IgG

Immunogen Catalog Number:

AG28252

GenBank Accession Number:

NM_010130

GeneID (NCBI):

13733

UNIPROT ID:

Q61549

Full Name:

EGF-like module containing, mucin-like, hormone receptor-like sequence

1

Calculated MW:

102 kDa

Purification Method:

Antigen affinity purification

Recommended Dilutions:

IF 1:50-1:500

Excitation/Emission maxima wavelengths:

493 nm / 522 nm

Applications

Tested Applications:

FC (Intra), IF-P

Species Specificity:

Mouse

Positive Controls:

IF : mouse spleen tissue,

Background Information

Mouse F4/80, also named as EMR1 and Gpf480, is a 160kd cell surface glycoprotein which is a member of the EGF TM7 family. The F4/80 molecule is solely expressed on the surface of macrophages and serves as a marker for mature macrophage tissues, including Kupffer cells in liver, splenic red pulp macrophages, brain microglia, gut lamina propria and Langerhans cells in the skin. The function of F4/80 is unclear, but it is speculated to be involved in macrophage adhesion events, cell migration or as a G protein-coupled signaling component of macrophages.

Storage

Storage:

Store at -20°C. Avoid exposure to light. Stable for one year after shipment.

Storage Buffer:

PBS with 50% Glycerol, 0.05% Proclin300, 0.5% BSA, pH 7.3.

Aliquoting is unnecessary for -20°C storage

For technical support and original validation data for this product please contact:

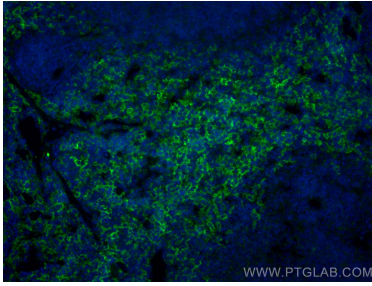
T: 4006900926

E: Proteintech-CN@ptglab.com

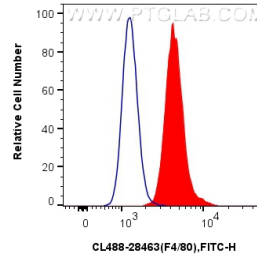
W: ptgcn.com

This product is exclusively available under Proteintech Group brand and is not available to purchase from any other manufacturer.

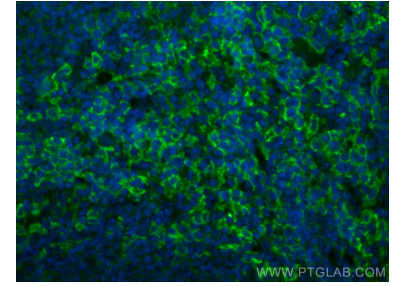
Selected Validation Data



Immunofluorescent analysis of (4% PFA) fixed paraffin-embedded mouse spleen tissue using CoraLite® Plus 488 F4/80 antibody (CL488-28463) at dilution of 1:200. Heat mediated antigen retrieval with Tris-EDTA buffer (pH 9.0).



1×10^6 RAW 264.7 cells were intracellularly stained with 0.8 μ g CoraLite® Plus 488 Anti-Mouse F4/80 (CL488-28463) (red), or 0.8 μ g CoraLite® Plus 488-conjugated Rabbit IgG control Rabbit PolyAb (CL488-30000, Clone:) (blue). Cells were fixed with 4% PFA and permeabilized with Flow Cytometry Perm Buffer (PF00011-C).



Immunofluorescent analysis of (4% PFA) fixed paraffin-embedded mouse spleen tissue using CoraLite® Plus 488 F4/80 antibody (CL488-28463) at dilution of 1:200. Heat mediated antigen retrieval with Tris-EDTA buffer (pH 9.0).