

For Research Use Only

# CoraLite® Plus 488-conjugated ICAM-1 Monoclonal antibody



Catalog Number: CL488-60299

Featured Product

## Basic Information

Catalog Number:

CL488-60299

Size:

1000 µg/ml

Source:

Mouse

Isotype:

IgG2b

Immunogen Catalog Number:

AG8309

GenBank Accession Number:

BC015969

GeneID (NCBI):

3383

ENSEMBL Gene ID:

ENSG00000090339

UNIPROT ID:

P05362

Full Name:

intercellular adhesion molecule 1

Calculated MW:

90 kDa

Observed MW:

85-95 kDa

Purification Method:

Protein A purification

CloneNo.:

2F9A8

Recommended Dilutions:

IF 1:50-1:500

Excitation/Emission maxima wavelengths:

493 nm / 522 nm

## Applications

Tested Applications:

FC, IF/ICC

Species Specificity:

human

Positive Controls:

IF : human lung cancer tissue,

## Background Information

ICAM-1 (CD54) is a 90-kDa transmembrane glycoprotein of the immunoglobulin superfamily and is critical for the firm attachment and transmigration of leukocytes out of blood vessels and into tissues (PMID: 19307690). ICAM-1 is expressed by several cell types, typically on endothelial cells and cells of the immune system, and its expression can be up-regulated by various stimuli, including TNF- $\alpha$ , INF- $\gamma$ , IL-1 and thrombin (PMID: 3086451; 9694714; 15979056). It is a ligand for LFA-1 and Mac-1, serves as a receptor for rhinovirus, and is one of several receptors used by Plasmodium falciparum (PMID: 2566624; 2538244; 2475784).

## Storage

Storage:

Store at -20°C. Avoid exposure to light. Stable for one year after shipment.

Storage Buffer:

PBS with 50% Glycerol, 0.05% Proclin300, 0.5% BSA, pH 7.3.

Aliquoting is unnecessary for -20°C storage

For technical support and original validation data for this product please contact:

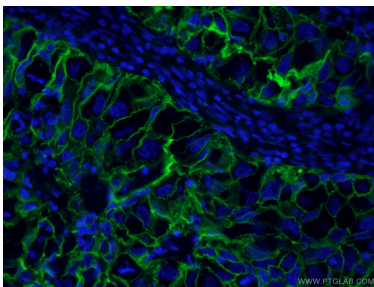
T: 4006900926

E: [Proteintech-CN@ptglab.com](mailto:Proteintech-CN@ptglab.com)

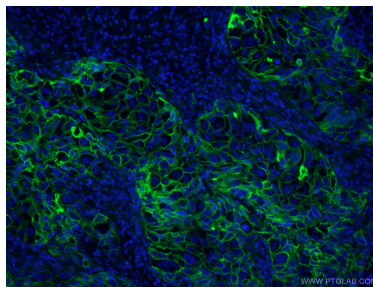
W: [ptgcn.com](http://ptgcn.com)

This product is exclusively available under Proteintech Group brand and is not available to purchase from any other manufacturer.

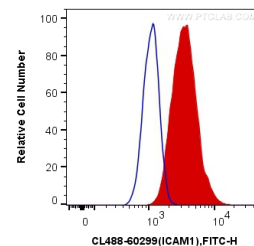
## Selected Validation Data



Immunofluorescent analysis of (4% PFA) fixed human lung cancer tissue using CL488-60299 (ICAM-1 antibody) at dilution of 1:100.



Immunofluorescent analysis of (4% PFA) fixed human lung cancer tissue using CL488-60299 (ICAM-1 antibody) at dilution of 1:100.



1X10<sup>6</sup> Raji cells were surface stained with 0.8 ug CoraLite® Plus 488 Anti-Human ICAM-1 (CL488-60299, Clone:2F9A8) (red), or 0.8 ug Mouse IgG2b Isotype Control (CL488-66360-3, Clone: K11B8C4B5) (blue). Cells were not fixed.