

For Research Use Only

# CoraLite® Plus 488-conjugated c-SRC Monoclonal antibody



Catalog Number: CL488-60315

## Basic Information

<b>Catalog Number:</b> CL488-60315	<b>GenBank Accession Number:</b> BC011566	<b>Purification Method:</b> Protein A purification
<b>Size:</b> 1000 µg/ml	<b>GeneID (NCBI):</b> 6714	<b>CloneNo.:</b> 5E10C4
<b>Source:</b> Mouse	<b>ENSEMBL Gene ID:</b> ENSG00000197122	<b>Excitation/Emission maxima wavelengths:</b> 493 nm / 522 nm
<b>Isotype:</b> IgG2b	<b>UNIPROT ID:</b> P12931	
<b>Immunogen Catalog Number:</b> AG22306	<b>Full Name:</b> v-src sarcoma (Schmidt-Ruppin A-2) viral oncogene homolog (avian)	
	<b>Calculated MW:</b> 60 kDa	
	<b>Observed MW:</b> 60 kDa	

## Applications

**Tested Applications:**  
FC (Intra)

**Species Specificity:**  
human, hamster, mouse

## Background Information

SRC, also named as SRC1 and p60-Src, belongs to the protein kinase superfamily, Tyr protein kinase family and SRC subfamily. It is a non-receptor protein tyrosine kinase that plays pivotal roles in numerous cellular processes such as proliferation, migration, and transformation. In concert with PTK2B, SRC plays an important role in osteoclastic bone resorption. It promotes energy production in osteoclasts by activating mitochondrial cytochrome C oxidase.

## Storage

**Storage:**  
Store at -20°C. Avoid exposure to light. Stable for one year after shipment.

**Storage Buffer:**  
PBS with 50% Glycerol, 0.05% Proclin300, 0.5% BSA, pH 7.3.

**Aliquoting is unnecessary for -20°C storage**

For technical support and original validation data for this product please contact:

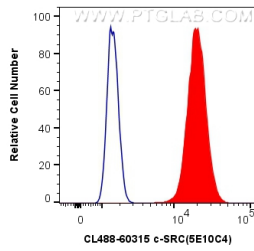
T: 4006900926

E: [Proteintech-CN@ptglab.com](mailto:Proteintech-CN@ptglab.com)

W: [ptgcn.com](http://ptgcn.com)

**This product is exclusively available under Proteintech Group brand and is not available to purchase from any other manufacturer.**

## Selected Validation Data



1X10<sup>6</sup> MCF-7 cells were intracellularly stained with 0.4 ug CoraLite® Plus 488 Anti-Human c-SRC (CL488-60315, Clone:5E10C4) (red), or 0.4 ug Mouse IgG2b Isotype Control (CL488-66360-3, Clone: K11B8C4B5) (blue). Cells were fixed with 4% PFA and permeabilized with Flow Cytometry Perm Buffer (PF00011-C).