

For Research Use Only

# CoraLite® Plus 488 Anti-Human CD45 (2D1)



Catalog Number: CL488-65082

## Basic Information

<b>Catalog Number:</b> CL488-65082	<b>GenBank Accession Number:</b> BC014239	<b>Purification Method:</b> Affinity purification
<b>Size:</b> 100tests, 5 µl/test	<b>GeneID (NCBI):</b> 5788	<b>CloneNo.:</b> 2D1
<b>Source:</b> Mouse	<b>ENSEMBL Gene ID:</b> ENSG00000081237	<b>Recommended Dilutions:</b> IF 1:200-1:800
<b>Isotype:</b> IgG1, kappa	<b>Full Name:</b> protein tyrosine phosphatase, receptor type, C	<b>Excitation/Emission maxima wavelengths:</b> 493 nm / 522 nm

## Applications

<b>Tested Applications:</b> FC, IF/ICC	<b>Positive Controls:</b> IF : human peripheral blood mononuclear cells,
<b>Species Specificity:</b> Human	

## Background Information

CD45, also known as protein tyrosine phosphatase, receptor type C, is a type I transmembrane protein expressed on the surface of all haematopoietic cells with the exception of erythrocytes and platelets (PMID: 3489673; 28615666). CD45 is a pan-haematopoietic cell marker and has been shown to be essential for T- and B-cell activation and signalling (PMID: 9429890; 16378097).

## Storage

**Storage:**  
Store at 2-8°C. Avoid exposure to light. Stable for one year after shipment.  
**Storage Buffer:**  
PBS with 0.1% sodium azide and 0.5% BSA, pH 7.3.

For technical support and original validation data for this product please contact:

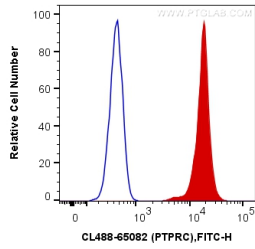
T: 4006900926

E: [Proteintech-CN@ptglab.com](mailto:Proteintech-CN@ptglab.com)

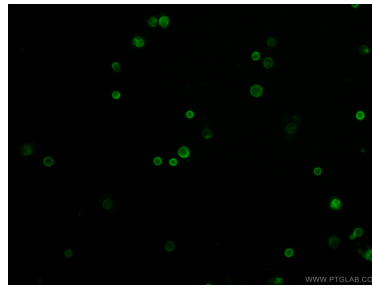
W: [ptgcn.com](http://ptgcn.com)

This product is exclusively available under Proteintech Group brand and is not available to purchase from any other manufacturer.

## Selected Validation Data



1X10<sup>6</sup> human PBMCs were surface stained with 5 ul CoraLite® Plus 488 Anti-Human CD45 (CL488-65082, Clone:2D1) (red), or 5 ul Control Antibody. Cells were not fixed.



Immunofluorescent analysis of human peripheral blood mononuclear cells (PBMCs) using CoraLite® Plus 488-conjugated Anti-Human CD45 (CL488-65082, Clone: 2D1) at dilution of 1:400.