

For Research Use Only

# CoraLite® Plus 488 Anti-Human CD20 (2H7)



Catalog Number: CL488-65085

## Basic Information

Catalog Number:

CL488-65085

Size:

100 tests, 5 µl/test

Source:

Mouse

Isotype:

Mouse IgG2b, kappa

GenBank Accession Number:

BC002807

GeneID (NCBI):

931

Full Name:

membrane-spanning 4-domains, subfamily A, member 1

Calculated MW:

297 aa, 33 kDa

Purification Method:

Affinity purification

CloneNo.:

2H7

Excitation/Emission maxima wavelengths:

493 nm / 522 nm

## Applications

Tested Applications:

FC

Species Specificity:

Human

## Background Information

CD20 is a 33-37 kDa transmembrane phosphoprotein belonging to the membrane-spanning 4A family (PMID: 3260267; 16785532). CD20 is a B-lymphocyte surface molecule that is widely expressed during B-cell ontogeny, from early pre-B-cell developmental stages until final differentiation into plasma cells (PMID: 7524522). CD20 functions as calcium-permeable cation channel (PMID: 7684739). It is involved in the regulation of B-cell activation, proliferation and differentiation (PMID: 7524522).

## Storage

Storage:

Store at 2-8°C. Avoid exposure to light.

Storage Buffer:

PBS with 0.1% sodium azide and 0.5% BSA, pH 7.3.

For technical support and original validation data for this product please contact:

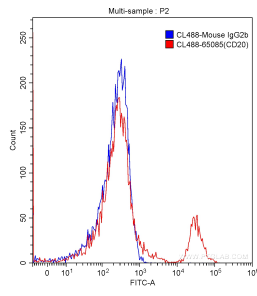
T: 4006900926

E: [Proteintech-CN@ptglab.com](mailto:Proteintech-CN@ptglab.com)

W: [ptgcn.com](http://ptgcn.com)

This product is exclusively available under Proteintech Group brand and is not available to purchase from any other manufacturer.

## Selected Validation Data



1X10<sup>6</sup> human peripheral blood lymphocytes were surface stained with 5.00 ul/test CoraLite® Plus 488-conjugated Anti-Human CD20 (CL488-65085, Clone: 2H7) (red) or isotype control antibody (blue). Cells were not fixed.