

# CoraLite® Plus 488-conjugated NSE Monoclonal antibody

Catalog Number: **CL488-66150**

## Basic Information

<b>Catalog Number:</b> CL488-66150	<b>GenBank Accession Number:</b> BC002745	<b>Purification Method:</b> Protein G purification
<b>Size:</b> 1000 µg/ml	<b>GeneID (NCBI):</b> 2026	<b>CloneNo.:</b> 6F8G3
<b>Source:</b> Mouse	<b>UNIPROT ID:</b> P09104	<b>Recommended Dilutions:</b> IF 1:50-1:500
<b>Isotype:</b> IgG1	<b>Full Name:</b> enolase 2 (gamma, neuronal)	<b>Excitation/Emission maxima wavelengths:</b> 493 nm / 522 nm
<b>Immunogen Catalog Number:</b> AG19106	<b>Calculated MW:</b> 47 kDa	
	<b>Observed MW:</b> 47 kDa	

## Applications

<b>Tested Applications:</b> FC (Intra), IF/ICC	<b>Positive Controls:</b> IF : mouse brain tissue,
<b>Species Specificity:</b> human, mouse, rat, pig	

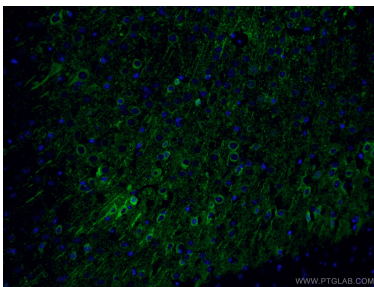
## Background Information

NSE, also named as ENO2, belongs to the enolase family. Enolases are cytoplasmic glycolytic enzymes that may be involved in differentiation. The enolase has three isoenzymes, alpha, beta and gamma. The alpha form is expressed in most tissues, whereas the beta form is expressed in muscle tissue. The gamma enolase (ENO2), a homodimer, is primarily localized in neurons and neuroendocrine cells and is a cancer diagnostic marker for brain tumors (PMID:7520111). ENO2 plays a role in the glycolysis-related energy pathway and might be involved in higher metabolic activity during the day than at night, at least in part. And this antibody is conjugated with CL488, Ex/Em 488 nm/515 nm.

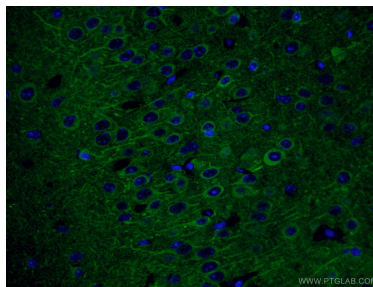
## Storage

**Storage:**  
Store at -20°C. Avoid exposure to light. Stable for one year after shipment.  
**Storage Buffer:**  
PBS with 50% Glycerol, 0.05% Proclin300, 0.5% BSA, pH 7.3.  
Aliquoting is unnecessary for -20°C storage

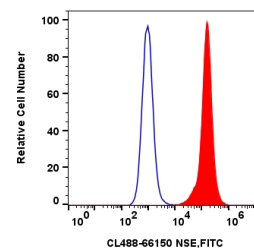
## Selected Validation Data



Immunofluorescent analysis of (4% PFA) fixed mouse brain tissue using CL488-66150 (NSE antibody) at dilution of 1:50.



Immunofluorescent analysis of (4% PFA) fixed mouse brain tissue using CL488-66150 (NSE antibody) at dilution of 1:50.



Neuronal cells derived from human dental pulp stem cells were fixed in 70% ethanol and blocked in 0.1% BSA in Staining Buffer, then stained with CoraLite® Plus 488-conjugated NSE Monoclonal Antibody (CL488-66150) (red) or unstained (blue). Image credit: @stemcell\_art on Instagram