

For Research Use Only

CoraLite® Plus 488-conjugated Apolipoprotein AI Monoclonal antibody



Catalog Number: **CL488-66206**

Basic Information

| | | |
|--------------------------------------|---------------------------------------|---|
| Catalog Number: CL488-66206 | GenBank Accession Number: BC005380 | Purification Method: Protein A purification |
| Size: 1000 µg/ml | GeneID (NCBI): 335 | CloneNo.: 1C9G5 |
| Source: Mouse | UNIPROT ID: P02647 | Recommended Dilutions: IF 1:50-1:500 |
| Isotype: IgG2b | Full Name: apolipoprotein A-I | Excitation/Emission maxima wavelengths: 493 nm / 522 nm |
| Immunogen Catalog Number: AG21920 | Calculated MW: 31 kDa | |
| | Observed MW: 26-28 kDa | |

Applications

Tested Applications:
IF/ICC

Species Specificity:
human, mouse

Positive Controls:

IF : HepG2 cells, L02 cells

Background Information

ApoA1 is a major protein component of high density lipoproteins (HDL) which is associated with reversed cholesterol transport, lipid/cholesterol binding, lecithin/cholesterol acyltransferase (LCAT) activation and specific receptors binding. It is synthesized in the liver and small intestine. Defects of ApoA1 cause low HDL level and systemic non-neuropathic amyloidosis. Serum concentration of ApoA1 is inversely related to the risk of developing atherosclerosis. This antibody was generated against the C-terminal region of human ApoA1.

Storage

Storage:

Store at -20°C. Avoid exposure to light. Stable for one year after shipment.

Storage Buffer:

PBS with 50% Glycerol, 0.05% Proclin300, 0.5% BSA, pH 7.3.

Aliquoting is unnecessary for -20°C storage

For technical support and original validation data for this product please contact:

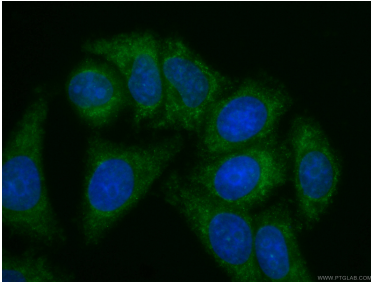
T: 4006900926

E: Proteintech-CN@ptglab.com

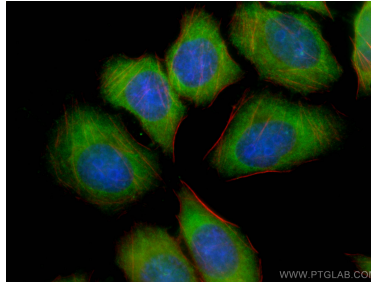
W: ptgcn.com

This product is exclusively available under Proteintech Group brand and is not available to purchase from any other manufacturer.

Selected Validation Data



Immunofluorescent analysis of (-20°C Ethanol) fixed HepG2 cells using CL488-66206 (Apolipoprotein AI antibody) at dilution of 1:100.



Immunofluorescent analysis of (-20°C Ethanol) fixed LO2 cells using CoraLite® Plus 488-conjugated Apolipoprotein AI antibody (CL488-66206, Clone: 1C9G5) at dilution of 1:100, CL594-Phalloidin (red).