

CoraLite® Plus 488-conjugated ASF/SF2 Monoclonal antibody

Catalog Number: **CL488-66671**

Basic Information

Catalog Number: CL488-66671	GenBank Accession Number: BC010264	Purification Method: Protein G purification
Size: 1000 µg/ml	GeneID (NCBI): 6426	CloneNo.: 1A6C5
Source: Mouse	UNIPROT ID: Q07955	Recommended Dilutions: IF 1:50-1:500
Isotype: IgG1	Full Name: splicing factor, arginine/serine-rich 1	Excitation/Emission maxima wavelengths: 493 nm / 522 nm
Immunogen Catalog Number: AG3626	Calculated MW: 248 aa, 28 kDa	
	Observed MW: 32 kDa, 28 kDa, 22 kDa	

Applications

Tested Applications: IF/ICC	Positive Controls: IF : HepG2 cells,
Species Specificity: Human, mouse, rat	

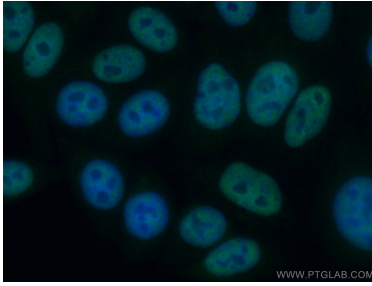
Background Information

SFRS1, also named as ASF, SF2, SF2P33, SFRS1 and ASF-1, belongs to the splicing factor SR family. It plays a role in preventing exon skipping, ensuring the accuracy of splicing and regulating alternative splicing. SFRS1 interacts with other spliceosomal components, via the RS domains, to form a bridge between the 5'- and 3'-splice site binding components, U1 snRNP and U2AF. Isoform ASF-2 and isoform ASF-3 act as splicing repressors. This antibody can recognize all the 3 isoforms(28kd,33kd and 22kd) of SFRS1.

Storage

Storage:
Store at -20°C. Avoid exposure to light.
Storage Buffer:
PBS with 50% Glycerol, 0.05% Proclin300, 0.5% BSA, pH 7.3.
Aliquoting is unnecessary for -20°C storage

Selected Validation Data



Immunofluorescent analysis of (4% PFA) fixed HepG2 cells using CoraLite® Plus 488-conjugated ASF/SF2 antibody (CL488-66671, Clone: 1A6C5) at dilution of 1:100.