

For Research Use Only

CoraLite® Plus 488-conjugated MTAP Monoclonal antibody



Catalog Number: CL488-66706

Basic Information

Catalog Number: CL488-66706	GenBank Accession Number: BC018625	Purification Method: Protein G purification
Size: 1000 µg/ml	GeneID (NCBI): 4507	CloneNo.: 2B1G6
Source: Mouse	UNIPROT ID: Q13126	Recommended Dilutions: IF 1:50-1:500
Isotype: IgG1	Full Name: methylthioadenosine phosphorylase	Excitation/Emission maxima wavelengths: 493 nm / 522 nm
Immunogen Catalog Number: AG17954	Calculated MW: 283 aa, 31 kDa	
	Observed MW: 31 kDa	

Applications

Tested Applications: IF/ICC	Positive Controls: IF : HeLa cells,
Species Specificity: Human, Mouse, Rat	

Background Information

MTAP is a 5-deoxy-5-methylthioadenosine (MTA) phosphorylase, converting MTA to salvageable intermediates including adenine and 5-methylthioribose-1-phosphate. MTAP is abundant in normal cells, but it is frequently found to be deleted in a variety of cancers. Its deficiency is common in cancer cell lines as well as in primary leukemia, lung cancer, melanoma, bladder cancer, gliomas and breast cancer.

Storage

Storage:
Store at -20°C. Avoid exposure to light. Stable for one year after shipment.
Storage Buffer:
PBS with 50% Glycerol, 0.05% Proclin300, 0.5% BSA, pH 7.3.
Aliquoting is unnecessary for -20°C storage

For technical support and original validation data for this product please contact:

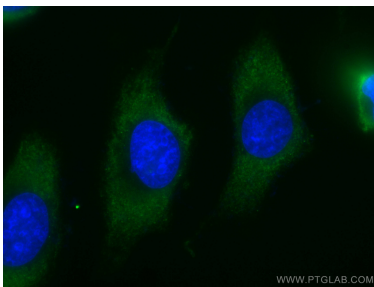
T: 4006900926

E: Proteintech-CN@ptglab.com

W: ptgcn.com

This product is exclusively available under Proteintech Group brand and is not available to purchase from any other manufacturer.

Selected Validation Data



Immunofluorescent analysis of (-20°C Ethanol) fixed HeLa cells using CoraLite® Plus 488-conjugated MTAP antibody (CL488-66706, Clone: 2B1G6) at dilution of 1:100.