

For Research Use Only

CoraLite® Plus 488-conjugated SYK Monoclonal antibody



Catalog Number: **CL488-66721**

Featured Product

Basic Information

Catalog Number:

CL488-66721

Size:

1000 µg/ml

Source:

Mouse

Isotype:

IgG2b

Immunogen Catalog Number:

AG17654

GenBank Accession Number:

BC001645

GeneID (NCBI):

6850

ENSEMBL Gene ID:

ENSG00000165025

UNIPROT ID:

P43405

Full Name:

spleen tyrosine kinase

Calculated MW:

635 aa, 72 kDa

Observed MW:

70-75 kDa

Purification Method:

Protein A purification

CloneNo.:

4C4A12

Recommended Dilutions:

WB 1:500-1:1000

Excitation/Emission maxima
wavelengths:

493 nm / 522 nm

Applications

Tested Applications:

WB

Species Specificity:

Human

Positive Controls:

WB : Daudi cells, Ramos cells, Raji cells

Background Information

SYK(spleen tyrosine kinase) is a key regulator of signal transduction events,apoptosis and orderly cell cycle progression in B-lineage lymphoid cells. Although SYK has not been linked to a human disease, defective expression of the closely related T-cell tyrosine kinase ZAP-70 has been associated with severe combined immunodeficiency(PMID:11494125). This protein has 2 isoforms produced by alternative splicing.

Storage

Storage:

Store at -20°C. Avoid exposure to light. Stable for one year after shipment.

Storage Buffer:

PBS with 50% Glycerol, 0.05% Proclin300, 0.5% BSA, pH 7.3.

Aliquoting is unnecessary for -20°C storage

For technical support and original validation data for this product please contact:

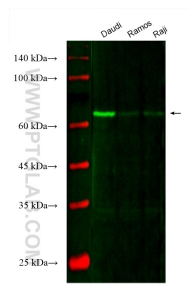
T: 4006900926

E: Proteintech-CN@ptglab.com

W: ptgcn.com

This product is exclusively available under Proteintech Group brand and is not available to purchase from any other manufacturer.

Selected Validation Data



Various lysates were subjected to SDS PAGE followed by western blot with CL488-66721 (SYK antibody) at dilution of 1:500 incubated at room temperature for 1.5 hours.