

# CoraLite® Plus 488-conjugated Cytokeratin 5 Monoclonal antibody

Catalog Number: **CL488-66727**

## Basic Information

**Catalog Number:**

CL488-66727

**Size:**

1000 µg/ml

**Source:**

Mouse

**Isotype:**

IgG1

**Immunogen Catalog Number:**

AG24184

**GenBank Accession Number:**

BC024292

**GeneID (NCBI):**

3852

**UNIPROT ID:**

P13647

**Full Name:**

keratin 5

**Calculated MW:**

590 aa, 62 kDa

**Observed MW:**

60 kDa

**Purification Method:**

Protein G purification

**CloneNo.:**

1A1C5

**Recommended Dilutions:**

IF-P 1:50-1:500

**Excitation/Emission maxima wavelengths:**

493 nm / 522 nm

## Applications

**Tested Applications:**

IF-P

**Species Specificity:**

Human, mouse, pig

**Positive Controls:**

IF-P: human oesophagus cancer tissue,

## Background Information

Keratins are a large family of proteins that form the intermediate filament cytoskeleton of epithelial cells. Keratin expression is highly regulated, tissue specific, and varies according to cell-state. Type I keratins consist of acidic, low molecular weight proteins with MW ranging from 40 kDa (KRT19) to 64 kDa (KRT9). Type 2 keratins consist of basic or neutral, high molecular weight proteins with MW from 52 kDa (KRT8) to 67 kDa (KRT18). Keratin 5, one 58-kD type II keratin, is coexpressed with a 50-kD keratin 14 in stratified squamous epithelia. Keratin 5, one 58-kD type II keratin, is coexpressed with a 50-kD tyK14 in stratified squamous epithelia.

## Storage

**Storage:**

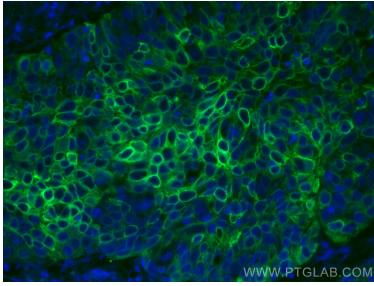
Store at -20°C. Avoid exposure to light. Stable for one year after shipment.

**Storage Buffer:**

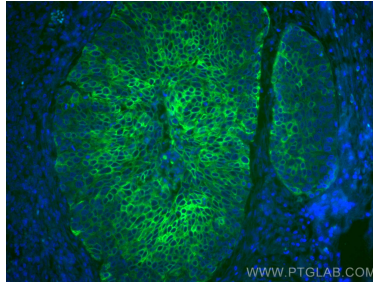
PBS with 50% Glycerol, 0.05% Proclin300, 0.5% BSA, pH 7.3.

Aliquoting is unnecessary for -20°C storage

## Selected Validation Data



Immunofluorescent analysis of (4% PFA) fixed human oesophagus cancer tissue using CoraLite® Plus 488 Cytokeratin 5 antibody (CL488-66727, Clone: 1A1C5 ) at dilution of 1:200.



Immunofluorescent analysis of (4% PFA) fixed human oesophagus cancer tissue using CoraLite® Plus 488 Cytokeratin 5 antibody (CL488-66727, Clone: 1A1C5 ) at dilution of 1:200.