

For Research Use Only

# CoraLite® Plus 488-conjugated PLA2G4D Monoclonal antibody



Catalog Number: **CL488-66752**

## Basic Information

<b>Catalog Number:</b> CL488-66752	<b>GenBank Accession Number:</b> BC034571	<b>Purification Method:</b> Protein G purification
<b>Size:</b> 1000 µg/ml	<b>GeneID (NCBI):</b> 283748	<b>CloneNo.:</b> 2E2A10
<b>Source:</b> Mouse	<b>UNIPROT ID:</b> Q86XP0	<b>Recommended Dilutions:</b> IF 1:50-1:500
<b>Isotype:</b> IgG1	<b>Full Name:</b> phospholipase A2, group IVD (cytosolic)	<b>Excitation/Emission maxima wavelengths:</b> 493 nm / 522 nm
<b>Immunogen Catalog Number:</b> AG4178	<b>Calculated MW:</b> 818 aa, 92 kDa	
	<b>Observed MW:</b> 92 kDa	

## Applications

<b>Tested Applications:</b> IF/ICC	<b>Positive Controls:</b> IF : HepG2 cells,
<b>Species Specificity:</b> Human	

## Background Information

PLA2G4D(Cytosolic phospholipase A2 delta) belongs to the phospholipase A2 enzyme family, catalyzes the hydrolysis of glycerophospholipids at the sn-2 position and then liberate free fatty acids and lysophospholipids. PLA2G4D expression is specifically upregulated in the upper epidermis of patients with inflammatory skin diseases(PMID:14709560).

## Storage

**Storage:**  
Store at -20°C. Avoid exposure to light. Stable for one year after shipment.  
**Storage Buffer:**  
PBS with 50% Glycerol, 0.05% Proclin300, 0.5% BSA, pH 7.3.  
Aliquoting is unnecessary for -20°C storage

For technical support and original validation data for this product please contact:

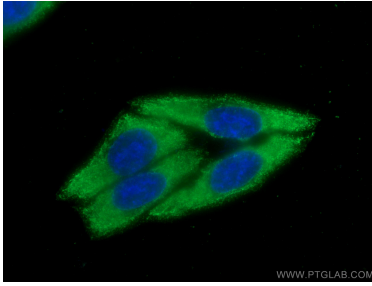
T: 4006900926

E: [Proteintech-CN@ptglab.com](mailto:Proteintech-CN@ptglab.com)

W: [ptgcn.com](http://ptgcn.com)

This product is exclusively available under Proteintech Group brand and is not available to purchase from any other manufacturer.

## Selected Validation Data



Immunofluorescent analysis of (-20°C Ethanol)  
fixed HepG2 cells using CoraLite® Plus 488  
PLA2G4D antibody (CL488-66752, Clone: 2E2A10 )  
at dilution of 1:200.