

CoraLite® Plus 488-conjugated LACTB Monoclonal antibody

Catalog Number: **CL488-66785**

Basic Information

Catalog Number:

CL488-66785

Size:

1000 µg/ml

Source:

Mouse

Isotype:

IgG1

Immunogen Catalog Number:

AG12233

GenBank Accession Number:

BC067288

GeneID (NCBI):

114294

UNIPROT ID:

P83111

Full Name:

lactamase, beta

Calculated MW:

547 aa, 61 kDa

Observed MW:

50-60 kDa

Purification Method:

Protein G purification

CloneNo.:

3C3C3

Recommended Dilutions:

IF 1:50-1:500

Excitation/Emission maxima wavelengths:

493 nm / 522 nm

Applications

Tested Applications:

IF/ICC

Species Specificity:

Human

Positive Controls:

IF : HepG2 cells,

Background Information

LACTB is also named as MRPL56, which is a component of the large subunit of the mitochondrial ribosome that is encoded by the nuclear genome. LACTB is a mammalian active-site serine protein that has evolved from a bacterial penicillin-binding protein. It promotes intramitochondrial membrane organization and micro-compartmentalization through polymerization (PMID:19858488). Northern blot analysis of mouse tissues detected expression at high levels in liver, heart, and skeletal muscle, with lower levels in kidney, testis, brain, lung, and spleen (PMID:11707067). The full-length of LACTB is about 61 kDa, and a 115aa transit peptide can be removed in the mature form.

Storage

Storage:

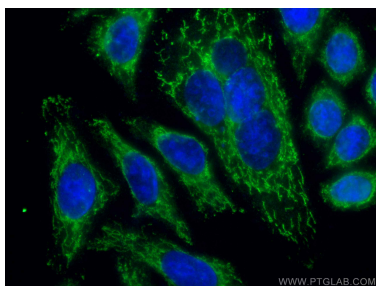
Store at -20°C. Avoid exposure to light.

Storage Buffer:

PBS with 50% Glycerol, 0.05% Proclin300, 0.5% BSA, pH 7.3.

Aliquoting is unnecessary for -20°C storage

Selected Validation Data



Immunofluorescent analysis of (-20°C Ethanol) fixed HepG2 cells using CoraLite® Plus 488 LACTB antibody (CL488-66785, Clone: 3C3C3) at dilution of 1:100.