

For Research Use Only

# CoraLite® Plus 488-conjugated TDRKH Monoclonal antibody



Catalog Number: CL488-66845

## Basic Information

<b>Catalog Number:</b> CL488-66845	<b>GenBank Accession Number:</b> BC032690	<b>Purification Method:</b> Protein G purification
<b>Size:</b> 1000 µg/ml	<b>GeneID (NCBI):</b> 11022	<b>CloneNo.:</b> 2B1B12
<b>Source:</b> Mouse	<b>UNIPROT ID:</b> Q9Y2W6	<b>Recommended Dilutions:</b> IF 1:400-1:1600
<b>Isotype:</b> IgG1	<b>Full Name:</b> tudor and KH domain containing	<b>Excitation/Emission maxima wavelengths:</b> 493 nm / 522 nm
<b>Immunogen Catalog Number:</b> AG4720	<b>Calculated MW:</b> 606 aa, 67 kDa	
	<b>Observed MW:</b> 67-70 kDa	

## Applications

<b>Tested Applications:</b> FC (Intra), IF/ICC	<b>Positive Controls:</b> IF : HepG2 cells,
<b>Species Specificity:</b> Human, mouse, rat, pig	

## Background Information

Tudor and KH domain-containing protein(TDRKH)Tudor domains are protein modules that mediate protein-protein interactions, potentially by binding to methylated ligands. Both KH and tudor domains are involved in binding RNA or single-strand DNA. Tudor also is a germ cell-specific protein with multiple Tudor domains and is involved in germ plasm formation and germ cell specification. TDRKH is one Tudor protein with a single Tudor domain.

## Storage

**Storage:**  
Store at -20°C. Avoid exposure to light.  
**Storage Buffer:**  
PBS with 50% Glycerol, 0.05% Proclin300, 0.5% BSA, pH 7.3.  
Aliquoting is unnecessary for -20°C storage

For technical support and original validation data for this product please contact:

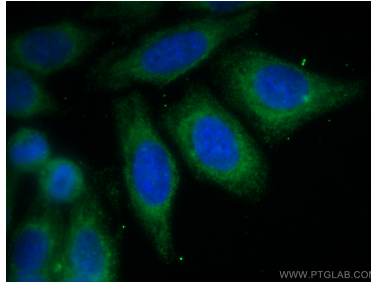
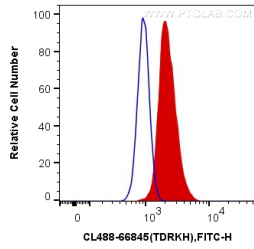
T: 4006900926

E: [Proteintech-CN@ptglab.com](mailto:Proteintech-CN@ptglab.com)

W: [ptgcn.com](http://ptgcn.com)

**This product is exclusively available under Proteintech Group brand and is not available to purchase from any other manufacturer.**

## Selected Validation Data



1X10<sup>6</sup> MCF-7 cells were intracellularly stained with 0.4 ug CoraLite® Plus 488 Anti-Human TDRKH (CL488-66845, Clone:2B1B12) (red), or 0.4 ug Mouse IgG1 Isotype Control (CL488-66360, Clone: T1F8D3F10) (blue). Cells were fixed with 4% PFA and permeabilized with Flow Cytometry Perm Buffer (PF00011-C).

Immunofluorescent analysis of (-20°C Methanol) fixed HepG2 cells using CoraLite® Plus 488 TDRKH antibody (CL488-66845, Clone: 2B1B12 ) at dilution of 1:800.