

For Research Use Only



CoraLite® Plus 488-conjugated RACK1; GNB2L1 Monoclonal antibody

Catalog Number: **CL488-66940**

Basic Information

Catalog Number: CL488-66940	GenBank Accession Number: BC019093	Purification Method: Protein A purification
Size: 1000 µg/ml	GeneID (NCBI): 10399	CloneNo.: 1E11A7
Source: Mouse	UNIPROT ID: P63244	Recommended Dilutions: IF 1:50-1:500
Isotype: IgG2a	Full Name: guanine nucleotide binding protein (G protein), beta polypeptide 2-like 1	Excitation/Emission maxima wavelengths: 493 nm / 522 nm
Immunogen Catalog Number: AG26708	Calculated MW: 36 kDa	

Applications

Tested Applications: IF/ICC	Positive Controls: IF : HeLa cells,
Species Specificity: Human	

Background Information

Members of the protein kinase C (PKC) family play a key regulatory role in a variety of cellular functions, including cell growth and differentiation, gene expression, hormone secretion and membrane function. RACK1 (receptor for activated protein kinase C 1), encoded by GNB2L1 gene, is a 317 amino acid guanine nucleotide-binding protein subunit beta-2-like 1 protein which is involved in the recruitment, assembly and/or regulation of a variety of signaling molecules, it contains 7 WD-repeats and is implicated in various protein interaction activities. RACK1 is a component of the 40S ribosomal subunit involved in translational repression. Recent finding suggests that RACK1 may be a new promising diagnosis biomarker and therapeutic target for non-small-cell lung cancer (NSCLC).

Storage

Storage:
Store at -20°C. Avoid exposure to light.
Storage Buffer:
PBS with 50% Glycerol, 0.05% Proclin300, 0.5% BSA, pH 7.3.
Aliquoting is unnecessary for -20°C storage

For technical support and original validation data for this product please contact:

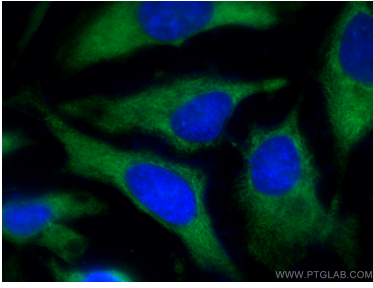
T: 4006900926

E: Proteintech-CN@ptglab.com

W: ptgcn.com

This product is exclusively available under Proteintech Group brand and is not available to purchase from any other manufacturer.

Selected Validation Data



Immunofluorescent analysis of (-20°C Methanol) fixed HeLa cells using CoraLite® Plus 488 RACK1; GNB2L1 antibody (CL488-66940, Clone: 1E11A7) at dilution of 1:200.