

For Research Use Only

CoraLite® Plus 488-conjugated FSHB Monoclonal antibody



Catalog Number: **CL488-67131**

Basic Information

Catalog Number:

CL488-67131

Size:

1000 µg/ml

Source:

Mouse

Isotype:

IgG2b

Immunogen Catalog Number:

AG13788

GenBank Accession Number:

BC113488

GeneID (NCBI):

2488

UNIPROT ID:

P01225

Full Name:

follicle stimulating hormone, beta polypeptide

Calculated MW:

129 aa, 15 kDa

Observed MW:

15 kDa

Purification Method:

Protein A purification

CloneNo.:

1B10A11

Recommended Dilutions:

IF 1:50-1:500

Excitation/Emission maxima wavelengths:

493 nm / 522 nm

Applications

Tested Applications:

IF/ICC

Species Specificity:

Human

Positive Controls:

IF : HepG2 cells,

Background Information

The FSHB gene encodes the beta subunit of follicle-stimulating hormone (FSH), particularly expressed in gonadotroph cells within the anterior pituitary gland and plays a critical role in the regulation of gonadal function, pubertal maturation and reproductive processes in mammals. The transcription of the FSHB gene is critical for the production of the FSH hormone (PMID:28281143). And FSH is required for ovarian folliculogenesis in females, in males it promotes spermatogenesis in conjunction with testosterone (PMID:11739331). Mutations in FSHB gene would result in infertility both in men and women (PMID: 23766128).

Storage

Storage:

Store at -20°C. Avoid exposure to light. Stable for one year after shipment.

Storage Buffer:

PBS with 50% Glycerol, 0.05% Proclin300, 0.5% BSA, pH 7.3.

Aliquoting is unnecessary for -20°C storage

For technical support and original validation data for this product please contact:

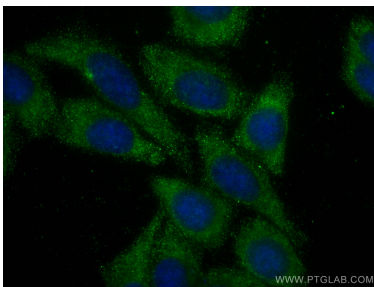
T: 4006900926

E: Proteintech-CN@ptglab.com

W: ptgcn.com

This product is exclusively available under Proteintech Group brand and is not available to purchase from any other manufacturer.

Selected Validation Data



Immunofluorescent analysis of (-20°C Ethanol) fixed HepG2 cells using CoraLite® Plus 488 FSHB antibody (CL488-67131, Clone: 1B10A11) at dilution of 1:200.