

For Research Use Only

CoraLite® Plus 488-conjugated CDC25B Monoclonal antibody



Catalog Number: CL488-67145

Basic Information

Catalog Number:

CL488-67145

Size:

1000 µg/ml

Source:

Mouse

Isotype:

IgG2b

Immunogen Catalog Number:

AG27193

GenBank Accession Number:

BC006395

GeneID (NCBI):

994

UNIPROT ID:

P30305

Full Name:

cell division cycle 25 homolog B (S. pombe)

Calculated MW:

65 kDa

Observed MW:

69 kDa

Purification Method:

Protein A purification

CloneNo.:

1H3A4

Excitation/Emission maxima
wavelengths:

493 nm / 522 nm

Applications

Tested Applications:

FC (Intra)

Species Specificity:

Human, Mouse, rat

Background Information

CDC25B, also named as CDC25HU2, belongs to the MPI phosphatase family. It is a tyrosine protein phosphatase which functions as a dosage-dependent inducer of mitotic progression. CDC25B directly dephosphorylates CDK1 and stimulates its kinase activity. The three isoforms seem to have a different level of activity.

Storage

Storage:

Store at -20°C. Avoid exposure to light. Stable for one year after shipment.

Storage Buffer:

PBS with 50% Glycerol, 0.05% Proclin300, 0.5% BSA, pH 7.3.

Aliquoting is unnecessary for -20°C storage

For technical support and original validation data for this product please contact:

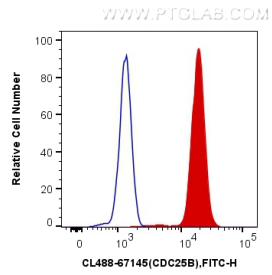
T: 4006900926

E: Proteintech-CN@ptglab.com

W: ptgcn.com

This product is exclusively available under Proteintech Group brand and is not available to purchase from any other manufacturer.

Selected Validation Data



1X10⁶ Jurkat cells were intracellularly stained with 0.4 ug CoraLite® Plus 488 Anti-Human CDC25B (CL488-67145, Clone:1H3A4) (red), or 0.4 ug x. Cells were fixed and permeabilized with Transcription Factor Staining Buffer Kit (PF00011).