

For Research Use Only

CoraLite® Plus 488-conjugated FXVD1 Monoclonal antibody



Catalog Number: CL488-67150

Basic Information

Catalog Number:

CL488-67150

Size:

1000 µg/ml

Source:

Mouse

Isotype:

IgG2a

Immunogen Catalog Number:

AG25307

GenBank Accession Number:

BC032800

GeneID (NCBI):

5348

UNIPROT ID:

O00168

Full Name:

FXVD domain containing ion transport
regulator 1

Calculated MW:

92 aa, 10 kDa

Observed MW:

15 kDa

Purification Method:

Protein A purification

CloneNo.:

2C10G9

Excitation/Emission maxima
wavelengths:

493 nm / 522 nm

Applications

Tested Applications:

FC (Intra)

Species Specificity:

Human, Pig, mouse

Background Information

FXVD1, also named as PLM and Phospholemman, belongs to the FXVD family. FXVD1 induces a hyperpolarization-activated chloride current when expressed in *Xenopus* oocytes. It may have a functional role in muscle contraction. FXVD1 is a partner protein and regulator of the Na⁺,K⁺-ATPase (Na⁺,K⁺-pump). It may play a role in the acute regulation of the Na⁺,K⁺-ATPase response to exercise. (PMID: 20595385, 21653224)

Storage

Storage:

Store at -20°C. Avoid exposure to light. Stable for one year after shipment.

Storage Buffer:

PBS with 50% Glycerol, 0.05% Proclin300, 0.5% BSA, pH 7.3.

Aliquoting is unnecessary for -20°C storage

For technical support and original validation data for this product please contact:

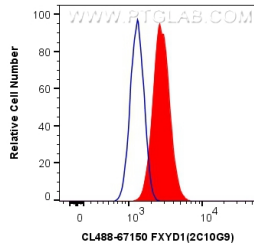
T: 4006900926

E: Proteintech-CN@ptglab.com

W: ptgcn.com

This product is exclusively available under Proteintech Group brand and is not available to purchase from any other manufacturer.

Selected Validation Data



1X10⁶ C2C12 cells were intracellularly stained with 0.8 ug CoraLite® Plus 488 Anti-Human FXYD1 (CL488-67150, Clone:2C10G9) (red), or 0.8 ug Control Antibody. Cells were fixed with 4% PFA and permeabilized with Flow Cytometry Perm Buffer (PF00011-C).