

For Research Use Only

# CoraLite® Plus 488-conjugated ACLY Monoclonal antibody



Catalog Number:CL488-67166

## Basic Information

Catalog Number:

CL488-67166

Size:

1000 µg/ml

Source:

Mouse

Isotype:

IgM

Immunogen Catalog Number:

AG7709

GenBank Accession Number:

BC006195

GeneID (NCBI):

47

UNIPROT ID:

P53396

Full Name:

ATP citrate Lyase

Calculated MW:

121 kDa

Observed MW:

120 kDa

Purification Method:

Caprylic acid/ammonium sulfate precipitation

CloneNo.:

1E10D5

Recommended Dilutions:

IF 1:50-1:500

Excitation/Emission maxima wavelengths:

493 nm / 522 nm

## Applications

Tested Applications:

IF/ICC

Species Specificity:

Human, Mouse, Rat

Positive Controls:

IF : A549 cells,

## Background Information

ACLY(ATP-citrate synthase) is also named as ACL. It is the primary enzyme responsible for the synthesis of cytosolic acetyl-CoA. ACLY serves as not only a target in oxygenated cells for suppression of lipid synthesis and histone acetylation, but also as a susceptible target in hypoxic cells to restore inhibition of glycolysis. In nonsmall cell lung carcinoma and hepatocellular carcinoma, ACLY is overexpressed compared with normal parenchyma suggesting that ACLY may represent a common target among highly malignant tumors(PMID:19795461). This protein has 2 isoforms produced by alternative splicing.

## Storage

Storage:

Store at -20°C. Avoid exposure to light. Stable for one year after shipment.

Storage Buffer:

PBS with 50% Glycerol, 0.05% Proclin300, 0.5% BSA, pH 7.3.

Aliquoting is unnecessary for -20°C storage

For technical support and original validation data for this product please contact:

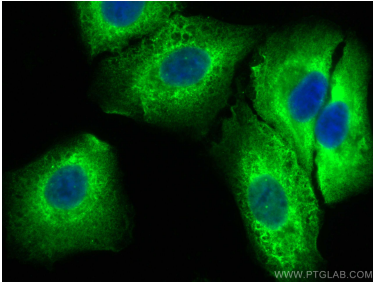
T: 4006900926

E: Proteintech-CN@ptglab.com

W: ptgcn.com

This product is exclusively available under Proteintech Group brand and is not available to purchase from any other manufacturer.

## Selected Validation Data



Immunofluorescent analysis of (4% PFA) fixed A549 cells using CoraLite® Plus 488 ACLY antibody (CL488-67166, Clone: 1E10D5) at dilution of 1:200.