

For Research Use Only

CoraLite® Plus 488-conjugated CUL2 Monoclonal antibody



Catalog Number: **CL488-67175**

Basic Information

Catalog Number: CL488-67175	GenBank Accession Number: BC009591	Purification Method: Protein G purification
Size: 1000 µg/ml	GeneID (NCBI): 8453	CloneNo.: 1A6G9
Source: Mouse	UNIPROT ID: Q13617	Recommended Dilutions: IF 1:50-1:500
Isotype: IgG1	Full Name: cullin 2	Excitation/Emission maxima wavelengths: 493 nm / 522 nm
Immunogen Catalog Number: AG28654	Calculated MW: 87 kDa	
	Observed MW: 85-90 kDa	

Applications

Tested Applications: IF/ICC	Positive Controls: IF : HeLa cells,
Species Specificity: Human, Rat	

Background Information

The cullin family proteins are scaffold proteins for the Ring finger type E3 ligases, participating in the proteolysis through the ubiquitin-proteasome pathway. Humans express seven cullin proteins: CUL1-3, CUL4A, CUL4B, CUL5, and CUL7. Each cullin protein can form an E3 ligase similar to the prototype Ring-type E3 ligase Skp1-CUL1-F-box complex. The Cullin-RING-finger type E3 ligases are important regulators in early embryonic development, as highlighted by genetic studies demonstrating that knock-out of CUL1, CUL3, or CUL4A in mice results in early embryonic lethality.

Storage

Storage:
Store at -20°C. Avoid exposure to light. Stable for one year after shipment.
Storage Buffer:
PBS with 50% Glycerol, 0.05% Proclin300, 0.5% BSA, pH 7.3.
Aliquoting is unnecessary for -20°C storage

For technical support and original validation data for this product please contact:

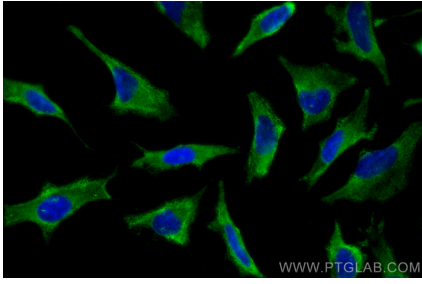
T: 4006900926

E: Proteintech-CN@ptglab.com

W: ptgcn.com

This product is exclusively available under Proteintech Group brand and is not available to purchase from any other manufacturer.

Selected Validation Data



Immunofluorescent analysis of (-20°C Methanol) fixed HeLa cells using Coralite® Plus 488 CUL2 antibody (CL488-67175, Clone: 1A6G9) at dilution of 1:200.