

For Research Use Only



CoraLite® Plus 488-conjugated ANAPC5 Monoclonal antibody

Catalog Number: **CL488-67348**

Basic Information

Catalog Number:

CL488-67348

Size:

1000 µg/ml

Source:

Mouse

Isotype:

IgG1

Immunogen Catalog Number:

AG7409

GenBank Accession Number:

BC001081

GeneID (NCBI):

51433

UNIPROT ID:

Q9UJX4

Full Name:

anaphase promoting complex subunit 5

5

Calculated MW:

85 kDa

Observed MW:

85 kDa, 72 kDa

Purification Method:

Protein G purification

CloneNo.:

2A7G5

Recommended Dilutions:

IF 1:50-1:500

Excitation/Emission maxima

wavelengths:

493 nm / 522 nm

Applications

Tested Applications:

IF-P

Species Specificity:

Human, Mouse, Rat

Positive Controls:

IF : human breast cancer tissue,

Background Information

Storage

Storage:

Store at -20°C. Avoid exposure to light.

Storage Buffer:

PBS with 50% Glycerol, 0.05% Proclin300, 0.5% BSA, pH 7.3.

Aliquoting is unnecessary for -20°C storage

For technical support and original validation data for this product please contact:

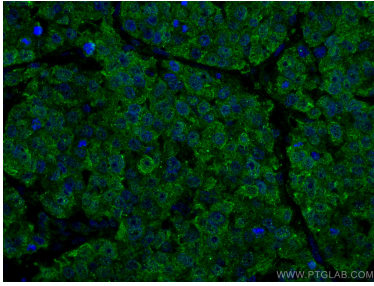
T: 4006900926

E: Proteintech-CN@ptglab.com

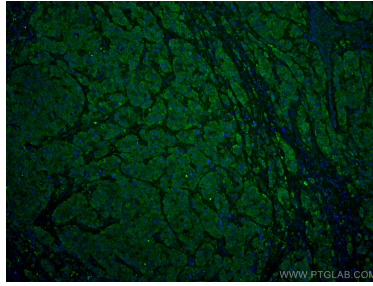
W: ptgcn.com

This product is exclusively available under Proteintech Group brand and is not available to purchase from any other manufacturer.

Selected Validation Data



Immunofluorescent analysis of (4% PFA) fixed human breast cancer tissue using CoraLite® Plus 488 ANAPC5 antibody (CL488-67348, Clone: 2A7G5) at dilution of 1:200.



Immunofluorescent analysis of (4% PFA) fixed human breast cancer tissue using CoraLite® Plus 488 ANAPC5 antibody (CL488-67348, Clone: 2A7G5) at dilution of 1:200.