

For Research Use Only

CoraLite® Plus 488-conjugated MAP1B Monoclonal antibody



Catalog Number: **CL488-67423**

Basic Information

Catalog Number: CL488-67423	GenBank Accession Number: BC141853	Purification Method: Protein G purification
Size: 1000 µg/ml	GeneID (NCBI): 4131	CloneNo.: 1E6B9
Source: Mouse	UNIPROT ID: P46821	Excitation/Emission maxima wavelengths: 493 nm / 522 nm
Isotype: IgG1	Full Name: microtubule-associated protein 1B	
Immunogen Catalog Number: AG17709	Calculated MW: 2468 aa, 271 kDa	

Applications

Tested Applications:
FC (Intra)

Species Specificity:
Human, rat, mouse

Background Information

Microtubule-associated protein 1B (MAP1B) is a cytoskeleton protein which can promote microtubule assembly. Previous reports have suggested that this protein is closely involved in neuronal development based on its extensive expression in the developing brain and moderate in mature neurons. Gene disruption or knockout studies of the MAP1B gene led to a delayed development of the nervous system in mice. It includes the N-terminal heavy chain and a C-terminal light chain. The MAP1B heavy chain has a microtubule-stabilization effect, and contains an actin-binding site that may play a role in the crosslinking of actin and microtubules, a function that may be important in neurite elongation. Various isoforms around 300-350 kDa of MAP1B can be observed due to the differences in phosphorylation state. (10704485)

Storage

Storage:
Store at -20°C. Avoid exposure to light. Stable for one year after shipment.

Storage Buffer:
PBS with 50% Glycerol, 0.05% Proclin300, 0.5% BSA, pH 7.3.

Aliquoting is unnecessary for -20°C storage

For technical support and original validation data for this product please contact:

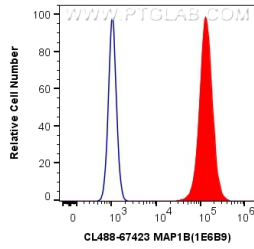
T: 4006900926

E: Proteintech-CN@ptglab.com

W: ptgcn.com

This product is exclusively available under Proteintech Group brand and is not available to purchase from any other manufacturer.

Selected Validation Data



1X10⁶ SH-SY5Y cells were intracellularly stained with 0.8 ug CoraLite® Plus 488 Anti-Human MAP1B (CL488-67423, Clone:1E6B9) (red), or 0.8 ug CoraLite® Plus 488 Mouse IgG1 Isotype Control (MOPC-21) (CL488-65124, Clone: MOPC-21) (blue). Cells were fixed with 4% PFA and permeabilized with Flow Cytometry Perm Buffer (PF00011-C).